



Mazda 3 2014-up*

*Visit MetraOnline.com for up-to-date vehicle specific applications.

D ISO DDIN radio provision*

P Painted matte black

This kit provides the ability to install an ISO DDIN aftermarket radio.

*This kit can only be used with an ISO DDIN radio with an "L" shaped chassis design, with the radio chassis at the bottom of the screen. As of this writing, only the Alpine INE-W967HD (discontinued, replaced by INE-W977HD), iLX-107, and iLX-207 have this design.

KIT COMPONENTS

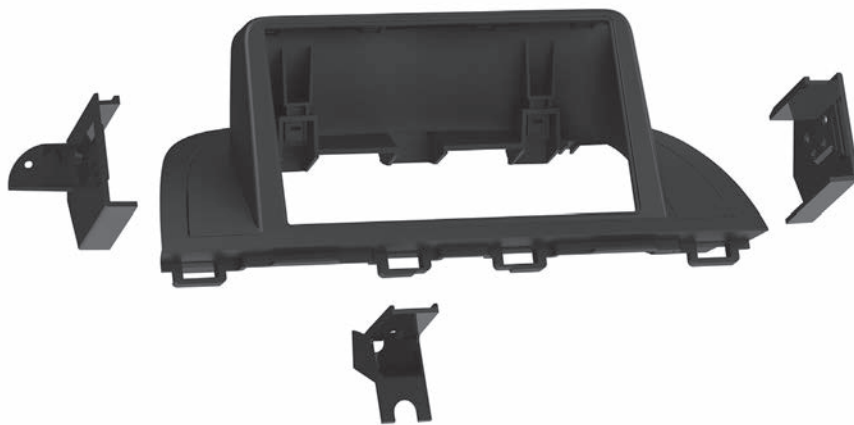
- Radio trim panel (a)
- Radio trim panel (b)
- Radio housing base
- Radio brackets
- Radio support bracket
- (4) Panel clips
- (2) #8 x 1/2" Phillips screws

WIRING & ANTENNA CONNECTIONS

(sold separately)

- Wiring Harness: 70-7903L (without amp)
- Antenna Adapter: 40-HD10L
- Steering wheel control interface: ASWC-1 & AX-MAZ28SWC-6V (will also retain backup camera)

SALES 800-221-0932



HARDWARE INCLUDED

