



## Toyota Prius 2010-2015 Toyota Prius PHV plug-in 2012-2015

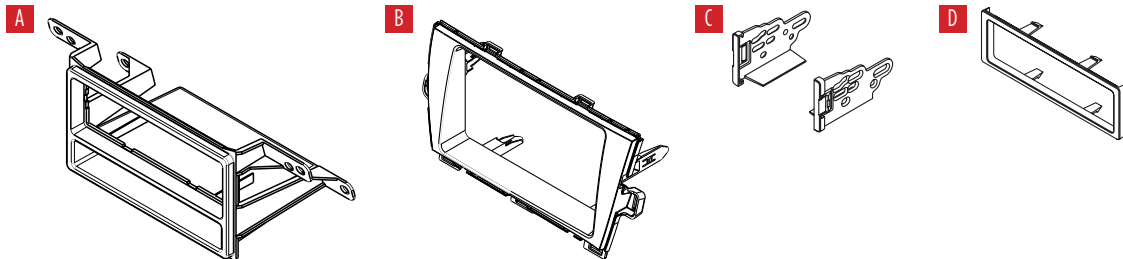
Visit [MetraOnline.com](http://MetraOnline.com) for more detailed information about the product and up-to-date vehicle specific applications

### KIT FEATURES

- DIN radio provision with pocket
- ISO DIN radio provision with pocket
- Painted scratch resistant matte black

### KIT COMPONENTS

- A) Radio housing • B) Radio housing trim panel • C) ISO brackets • D) ISO trim plate



### TABLE OF CONTENTS

Dash Disassembly .....	2
Kit Assembly .....	
-DIN radio provision with pocket .....	3
-ISO DIN radio provision with pocket .....	3

### WIRING & ANTENNA CONNECTIONS (sold separately)

Wiring Harness: Please visit [metraonline.com](http://metraonline.com) or [axessinterface.com](http://axessinterface.com) for wiring harness and interface options

Antenna Adapter: Not required

### TOOLS REQUIRED

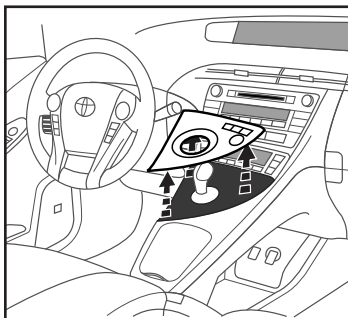
- Panel removal tool • Phillips screwdriver
- Socket wrench

**ATTENTION:** With the key out of the ignition, disconnect the negative battery terminal before installing this product. Ensure that all installation connections, especially the air bag indicator lights, are plugged in before reconnecting the battery or cycling the ignition to test this product.

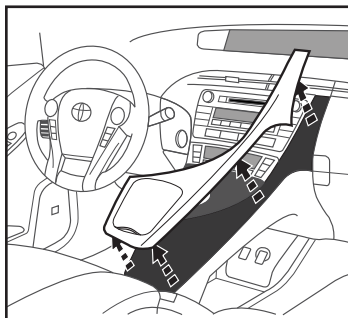
**NOTE:** Refer also to the instructions included with the aftermarket radio.

## DASH DISASSEMBLY

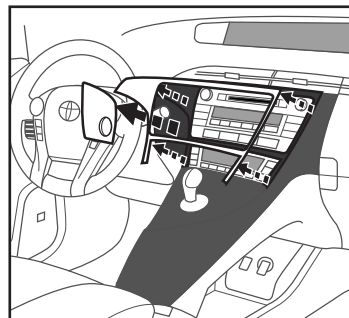
1. Unsnap and remove the shifter trim. (Figure A)
2. Unsnap and remove the console panel (extends from the pocket up the passenger side to the upper vents). (Figure B)
3. Unsnap the ignition button trim panel (not necessary to remove). (Figure C)
4. Unsnap and remove the radio/climate trim panel. (Figure C)
5. Remove (4) 10 mm bolts to remove the radio.



(Figure A)



(Figure B)



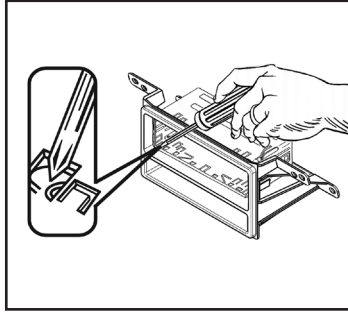
(Figure C)

*Continue to Kit Assembly*

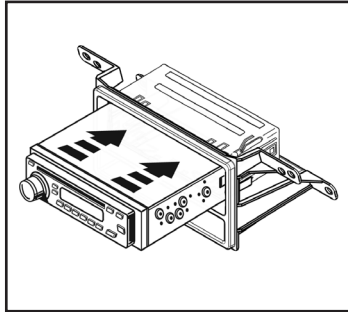
## KIT ASSEMBLY

### DIN radio provision with pocket

1. Locate the factory wiring harness in the dash. Metra recommends using the proper mating adapter from Metra or AXXESS. Re-connect the negative battery terminal and test the unit for proper operation.
2. Slide the DIN cage into the **radio housing** and secure by bending the metal locking tabs down. (Figure A)
3. Slide the aftermarket radio into the cage and secure. (Figure B)
4. Mount the radio assembly into the dash, snap the **radio housing trim panel** over that, and reassemble the dash in reverse order of disassembly.



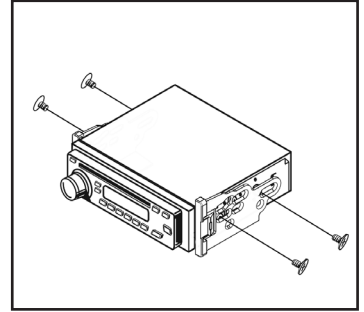
(Figure A)



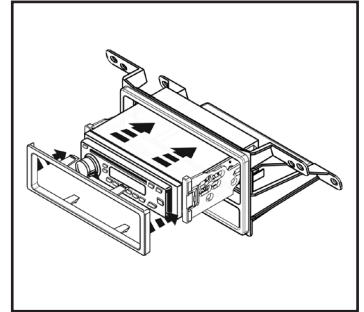
(Figure B)

### ISO DIN radio provision with pocket

1. Locate the factory wiring harness in the dash. Metra recommends using the proper mating adapter from Metra or AXXESS. Re-connect the negative battery terminal and test the unit for proper operation.
2. Mount the **ISO brackets** to the radio using the screws supplied with the radio. (Figure A)
3. Slide the radio/bracket assembly into the **radio housing** until the side clips engage. (Figure B)
4. Snap the **trim plate** into the **radio housing**. (Figure B)
5. Mount the radio assembly into the dash, snap the **radio housing trim panel** over that, and reassemble the dash in reverse order of disassembly.



(Figure A)



(Figure B)



**99-8226B**  
INSTALLATION INSTRUCTIONS



Having difficulties? We're here to help.



Contact our Tech Support line at:

**386-257-1187**



Or via email at:

[techsupport@metra-autosound.com](mailto:techsupport@metra-autosound.com)

**Tech Support Hours (Eastern Standard Time)**

Monday - Friday: 9:00 AM - 7:00 PM

Saturday: 10:00 AM - 5:00 PM

Sunday: 10:00 AM - 4:00 PM



**Metra recommends MECP  
certified technicians**