

Ford Select Models **2018-Up*** A2B Data Interface with Amplifier Bypass Harness & DSP

*Visit axxessinterfaces.com for current application list.

Visit MetraOnline.com and Axxessinterfaces.com for harness and interface options.

INTERFACE COMPONENTS

- AXDSPX-A2B2 interface
- AXDSPX-A2B2 harness
- Amplifier bypass harness
- Radio T-Harness
- AXBK-1
- A2B-EXT
- Bass Knob
- Extension Cable



TOOLS REQUIRED

- Crimping tool and connectors, or solder gun, solder, and heat shrink
- Tape
- Wire cutter
- Zip-ties

For Dash Disassembly Instructions, refer to metraonline.com. Enter the year, make, and model of the vehicle in the **Vehicle Fit Guide for Radio Install kits**.

TABLE OF CONTENTS

Interface Features.....	2
Things To Know About The AXDSP	3-4
Connections.....	5-6
Quick Setup Steps: AXDSP-XL App	7
LED Feedback	8

Google Play Store



Apple App Store
iOS 12.1 or higher



Metraonline.com



ATTENTION: With the key out of the ignition, disconnect the negative battery terminal before installing this product. Ensure that all installation connections, especially the air bag indicator lights, are plugged in before reconnecting the battery or cycling the ignition to test this product.

NOTE: Refer also to the instructions included with the aftermarket radio.

AXDSPX-A2B2 INTERFACE FEATURES

INTERFACE FEATURES

- Designed for B & O A2B amplifiers
- A2B data interface w/AXDSP-X (digital signal processor) built-in
- Includes an amplifier bypass harness
- Retains factory chimes including parking sensor chimes
- Retains SYNC voice prompts
- Chimes and voice prompts go through the aftermarket amplifier and/or cluster
- Selectable 31 Band graphic EQ or 5 Band Parametric EQ
- 10 individually assignable outputs
- Independent equalization on each of the 10 outputs
- Independent high pass, low pass, and bandpass filters
- Each channel can be delayed independently up to 10ms
- Clipping detection and limiting circuits
- Settings adjusted via Bluetooth® in a smart device application (tablet or mobile phone), compatible with both Android and Apple devices
- Read, write, and store configurations for future recall
- Password protect feature available in the mobile app
- Micro-B USB updatable

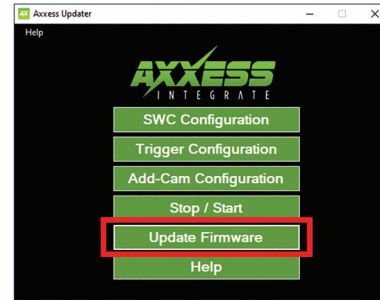
THINGS TO KNOW ABOUT THE AXDSP



Important: Updating your interface with the **Axxess Updater** is critical to the interface functioning properly.

Visit axxessinterfaces.com

Select **Updater Software** from the top menu bar.



 PC Axxess Updater

[Download Axxess Updater](#)



Micro-B Data Transfer Cable

Not included

THINGS TO KNOW ABOUT THE AXDSP CONT.

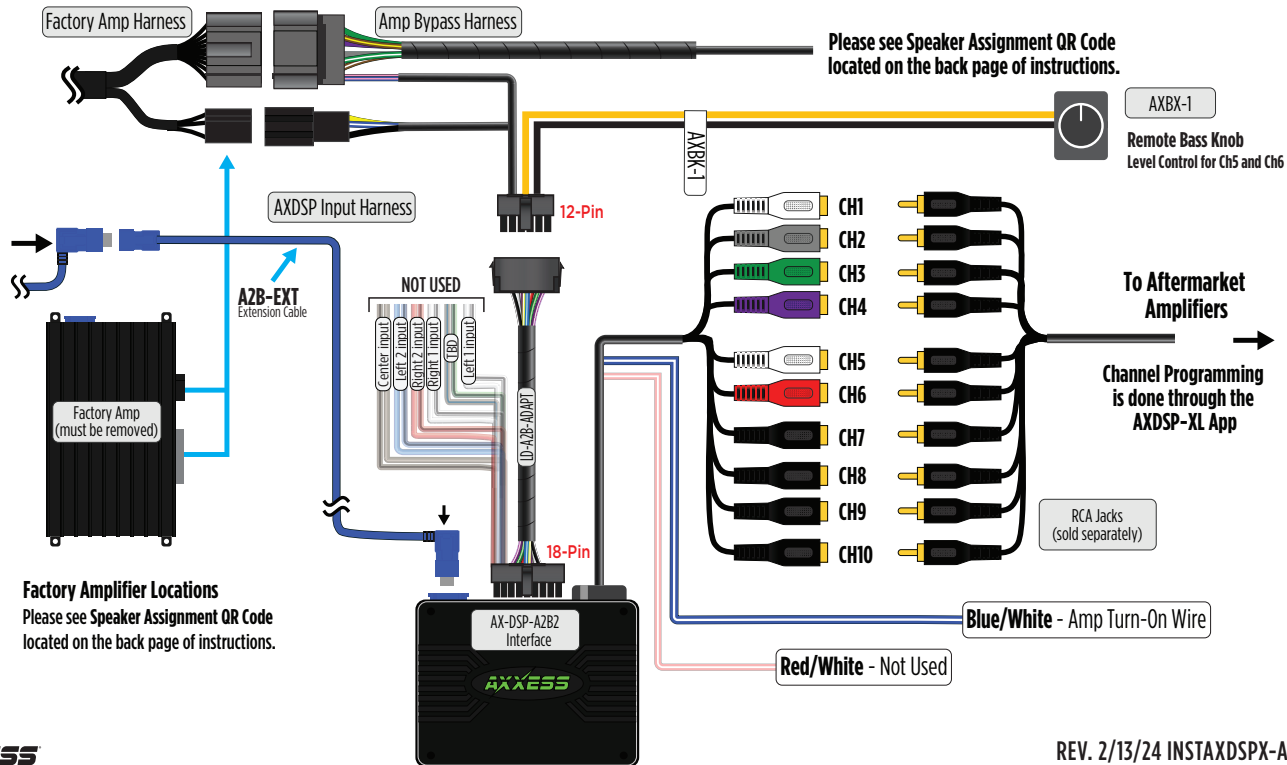
1. The factory amplifier will be completely removed from the vehicle. This interface can not be used to add a subwoofer only. Aftermarket amplifiers will need to be added to power the vehicle speakers.
2. Installation of the **AXDSPX** will be done at the factory amplifiers location, refer to the wire chart for locations. The harnessing installed at the factory amplifier location includes the bypass harness.
3. Two **T-harnesses** are included in the kit, one will be installed behind the factory radio to access factory speaker wires powered by the radio.
4. The included bass knob will adjust the output levels of your subwoofer. To set your subwoofer channel, select the **Outputs** page within the app. Under the **Location** column select the channel connected to your sub amp. From the drop-down menu select **Subwoofer**. Don't forget to **Lock Down**.
5. Vehicle chimes will output through the instrument cluster speaker. The chime levels are fixed.
6. If running multiple amplifiers, a relay is recommended.

The **AXDSP interface** doesn't require a full understanding of equalization, crossover setting, or time delay to function properly. After the quick setup process is completed the **AXDSP interface** will output a full range signal allowing for the use of an external DSP or to use the aftermarket amplifiers settings.

The **AXDSP** does offer all the standard features found in an external **DSP**. All settings and adjustments are made through the app. For more details on these added features please refer to the instructions under the **Setup Instructions** tab, or online at Axxessinterfaces.com for an explanation of each tab in the app.

CONNECTIONS TO BE MADE AT THE FACTORY AMPLIFIER'S LOCATION

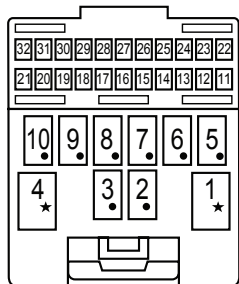
1. Locate the factory amp, unplug all connectors, then remove the amp.
2. Install the **AXDSPX-A2B2 harness** and make all necessary connections, but leave the amp turn-on wire disconnected.



CONNECTIONS TO BE MADE AT THE FACTORY RADIO'S LOCATION (CONT)

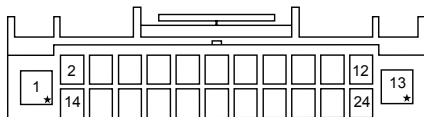
Wire Insertion View

Viewed from where the wires go into the connector



LD-FDSPK2
32 Pin

OR



LD-FDSPK1
22 Pin

Located Behind Dash



Factory Radio Chassis

T-Harness
Installation
Location

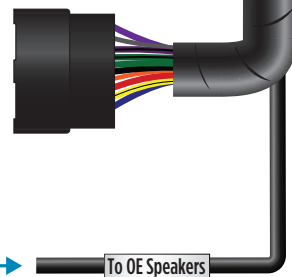
Interface kit includes two T-harnesses to tap into the speakers powered from the vehicle radio chassis

Factory Radio Harness



NOTE: For Factory Amplifier Locations, please see **Speaker Assignment QR Code** located on the back page of these instructions.

Run speaker wires to aftermarket amplifier(s)



To OE Speakers

QUICK SETUP STEPS THROUGH AXDSP-XL APP

Google Play Store

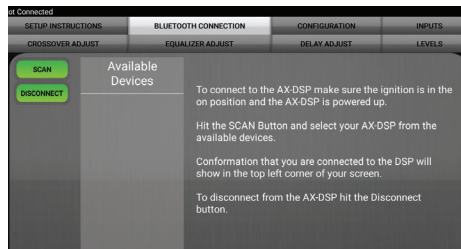


Apple App Store

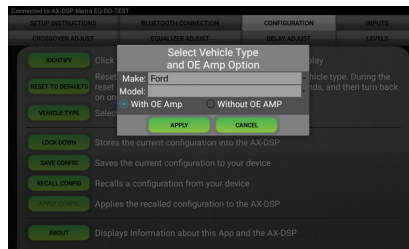
iOS 12.1 or higher



- Download and install the AXDSP-X app from the **Google Play Store** or **Apple App Store**.
- Turn Vehicle Ignition on. Make sure the Remote Turn on lead is disconnected.
- Open the app: Select **Bluetooth Connections** page.
 - Select **Scan**, all available AXDSP devices within range will be displayed. Select your AXDSP and hit connect. (Figure A)
- Select the Configuration page.
 - Select **Vehicle Type** Icon
 - Select the Vehicle Make: Ford
 - Select the Vehicle's model: _____ (Example: Bronco)
 - Select **With OE Amp**
 - Hit **Apply** (Figure B)
- Make sure radio volume is all the way down.
- Connect the amp turn-on wire from the **AXDSPX-A2B2** harness to the aftermarket amplifiers.
- From the **Configuration** page click the **Identify** button to confirm that the AXDSPX-A2B2 is connected properly. If so, a chime will be heard from the front left speaker.
- Press the **Lock Down** button to save the configuration. (Do not turn ignition off until this process is completed) (Figure C)
- Select the **Bluetooth Configurations** page and disconnect the DSPX.
- Turn ignition off, close all door then lock vehicle using the key fob. The vehicle will need to sit uninterrupted for 10 minutes while the vehicle goes to sleep. (Make sure Key fob is 15 feet away from the vehicle)
- Unlock Vehicle, turn ignition on and test radio's functions.
- Adjust the DSP settings in the app as desired. Refer to the instructions under the **Setup Instructions** tab, or online at Axxessinterfaces.com for an explanation of each tab in the app.

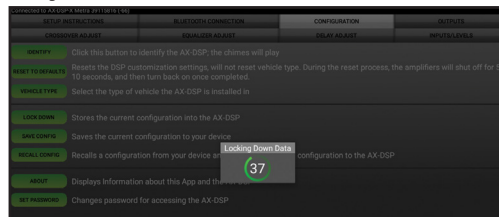


(Figure A)



(Figure B)

Locking Down Data



(Figure C)

**Last and the most important:
You MUST lock down your
configuration and cycle the key!!!**



AXDSPX-A2B2

INSTALLATION INSTRUCTIONS



A2B LED FEEDBACK

LED FEEDBACK

1 blink every 5 seconds = All good

2 blinks every 5 seconds = No A2B signal

3 blinks every 5 seconds = No CAN communication

Visit [AxxessInterfaces.com](https://www.AxxessInterfaces.com) for more detailed information about the product and up-to-date vehicle specific applications

Speaker Assignment



Metra recommends MECP certified technicians

Having difficulties? We're here to help.



Contact our Tech Support line at:

386-257-1187



Or via email at:

techsupport@metra-autosound.com

Tech Support Hours (Eastern Standard Time)

Monday - Friday: 9:00 AM - 7:00 PM

Saturday: 10:00 AM - 5:00 PM

Sunday: 10:00 AM - 4:00 PM