

Lincoln Select Models 2018-Up A2B Data Interface w/Amplifier Bypass Harness & DSP

Visit axxessinterfaces.com for current application list.

INTERFACE COMPONENTS

- AXDSPX-A2B3 interface
- AXDSPX-A2B3 harness
 - LD-DSP-A2B-3
 - LD-DSP-A2B-4
- AXDSPX-A2B3 interface harness (male connectors: 12-pin, 16-pin)
- Amplifier bypass harness (female connectors: 12-pin black, 20-pin gray)
- AXBK-1
- A2B-EXT

INTERFACE FEATURES

- Designed for Revel A2B amplifiers
- A2B data interface w/AXDSP-X (digital signal processor) built-in
- Includes an amplifier bypass harness
- Retains factory chimes including parking sensor chimes
- Retains voice prompts
- Chimes and voice prompts go through the aftermarket amplifier and/or cluster
- Selectable 31 Band graphic EQ or 5 Band Parametric EQ
- 10 individually assignable outputs

- Settings adjusted via Bluetooth® in a smart device application (tablet or mobile phone), compatible with both Android and Apple devices
- Independent equalization on each of the 10 outputs
- Independent high pass, low pass, and bandpass filters
- Each channel can be delayed independently up to 10ms
- Clipping detection and limiting circuits
- Read, write, and store configurations for future recall
- Password protect feature available in the mobile app
- Micro-B USB updatable

Metraonline.com



TABLE OF CONTENTS

Connections.....	2
Installation	3
LED Feedback	4

TOOLS REQUIRED

- Crimping tool and connectors, or solder gun, solder, and heat shrink
- Tape
- Wire cutter
- Zip ties

Google Play Store



Apple App Store

iOS 12.1 or higher

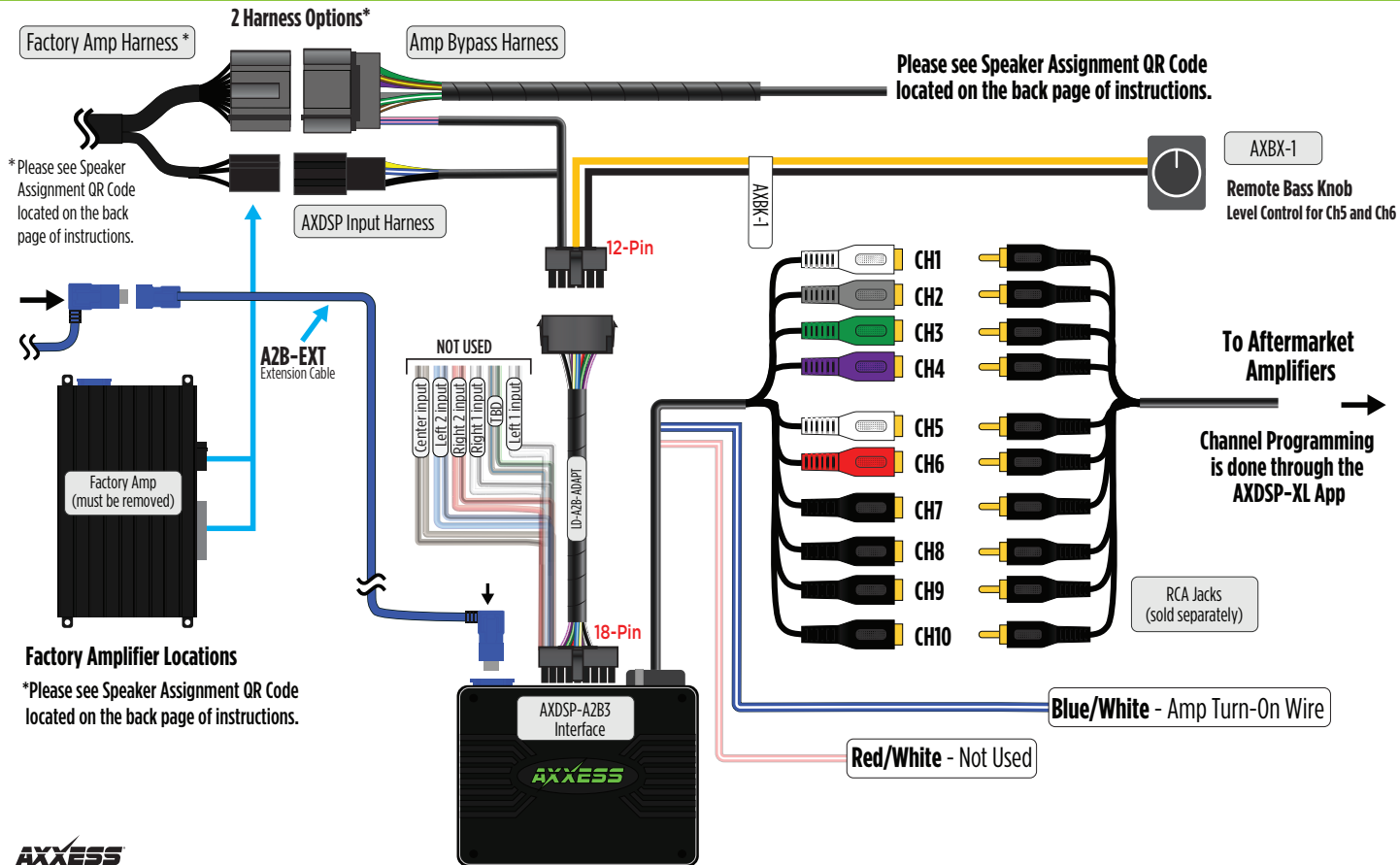


ATTENTION: With the key out of the ignition, disconnect the negative battery terminal before installing this product. Ensure that all installation connections, especially the air bag indicator lights, are plugged in before reconnecting the battery or cycling the ignition to test this product.

NOTE: Refer also to the instructions included with the aftermarket radio.

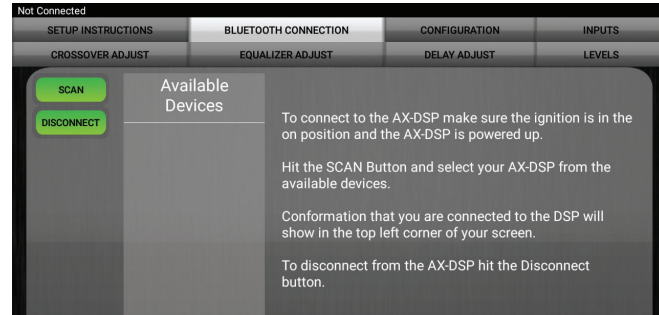
For **Dash Disassembly Instructions**, refer to metraonline.com. Enter the year, make, and model of the vehicle in the **Vehicle Fit Guide for Radio Install kits**.

CONNECTIONS TO BE MADE AT THE FACTORY AMPLIFIER'S LOCATION

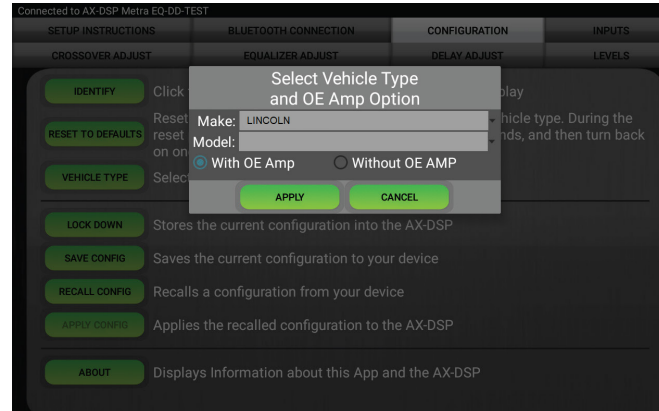


INSTALLATION

1. Locate the factory amp, unplug all connectors, then remove the amp.
2. Install the **AXDSPX-A2B3 harness** and make all necessary connections, but leave the amp turn-on wire disconnected.
Note: Ensure the USB connector from the factory amp is connected to the AXDSPX-A2B3.
3. Plug the 12-pin and 16-pin connectors from the **AXDSPX-A2B3 harness** into the **AXDSPX-A2B3 interface**.
4. Download and install the AXDSP-XL app from the **Google Play Store** or **Apple App Store**.
5. Open the app and follow the instructions on the **Bluetooth Connection** tab to pair the mobile device to the AXDSPX-A2B3. (Figure A)
6. Scroll to the **Configuration** tab then select the vehicle type. Press the **Lock Down** button to save the configuration. (Figure B)
7. Connect the amp turn-on wire from the **AXDSPX-A2B3 harness**.
8. Click the **Identify** button to confirm that the AXDSPX-A2B3 is connected properly. If so, a chime will be heard from the front left speaker or gauge cluster. Test all functions of the installation for proper operation.
9. Adjust the DSP settings in the app as desired. Refer to the instructions under the **Setup Instructions** tab, or online at Axxessinterfaces.com for an explanation of each tab in the app.



(Figure A)



(Figure B)

A2B LED FEEDBACK

LED FEEDBACK

1 blink every 5 seconds = All good

2 blinks every 5 seconds = No A2B signal

3 blinks every 5 seconds = No CAN communication

Visit [AxxessInterfaces.com](https://www.AxxessInterfaces.com) for more detailed information about the product and up-to-date vehicle specific applications

Speaker Assignment



Having difficulties? We're here to help.



Contact our Tech Support line at:

386-257-1187



Or via email at:

techsupport@metra-autosound.com

Tech Support Hours (Eastern Standard Time)

Monday - Friday: 9:00 AM - 7:00 PM

Saturday: 10:00 AM - 5:00 PM

Sunday: 10:00 AM - 4:00 PM



**Metra recommends MECP
certified technicians**