



MetraOnline.com may be used to assist with dash assembly instructions. Simply enter your Year, Make, Model vehicle into the vehicle fit guide and look for the Dash Kit Installation Instructions.



[www.MetraOnline.com](http://www.MetraOnline.com)

## BMW MOST25<sup>®</sup> DSPX Interface with Amplifier Bypass Harness 2010-2020

Visit [axssexinterfases.com](http://axssexinterfases.com) for a current application list

### INTERFACE COMPONENTS

- AXDSPX-BMWM25 interface
- AXDSPX-BMWM25 harness
- AXBK-1 Bass Knob
- LD-MOSTCAP
- BMWM25

### TOOLS & INSTALLATION ACCESSORIES REQUIRED

- Crimping tool and connectors, or solder gun, solder, and heat shrink
- Tape
- Wire cutter
- Zip-ties
- Multimeter
- Tone generator

### Google Play Store



### Apple App Store

iOS 12.1 or higher



### TABLE OF CONTENTS

Interface Features.....	2
Connections: Adding a Full-Range Amp & Sub to a Factory System.....	3
Installing the Fiber Optic Cable.....	4
Installation .....	5-6
Quick Setup Steps: AX-DSP-XL App.....	7
Specifications .....	8
Troubleshooting.....	9
LED Feedback .....	9
Speaker Assignment QR Code .....	10

Visit [AxsssexInterfases.com](http://AxsssexInterfases.com) for more detailed information about the product and up-to-date vehicle specific applications

**ATTENTION:** With the key out of the ignition, disconnect the negative battery terminal before installing this product. Ensure that all installation connections, especially the air bag indicator lights, are plugged in before reconnecting the battery or cycling the ignition to test this product.

**NOTE:** Refer also to the instructions included with the aftermarket accessory before installing this device.

For Dash Disassembly Instructions, refer to [metraonline.com](http://metraonline.com). Enter the year, make, and model of the vehicle in the **Vehicle Fit Guide for Radio Install kits**.

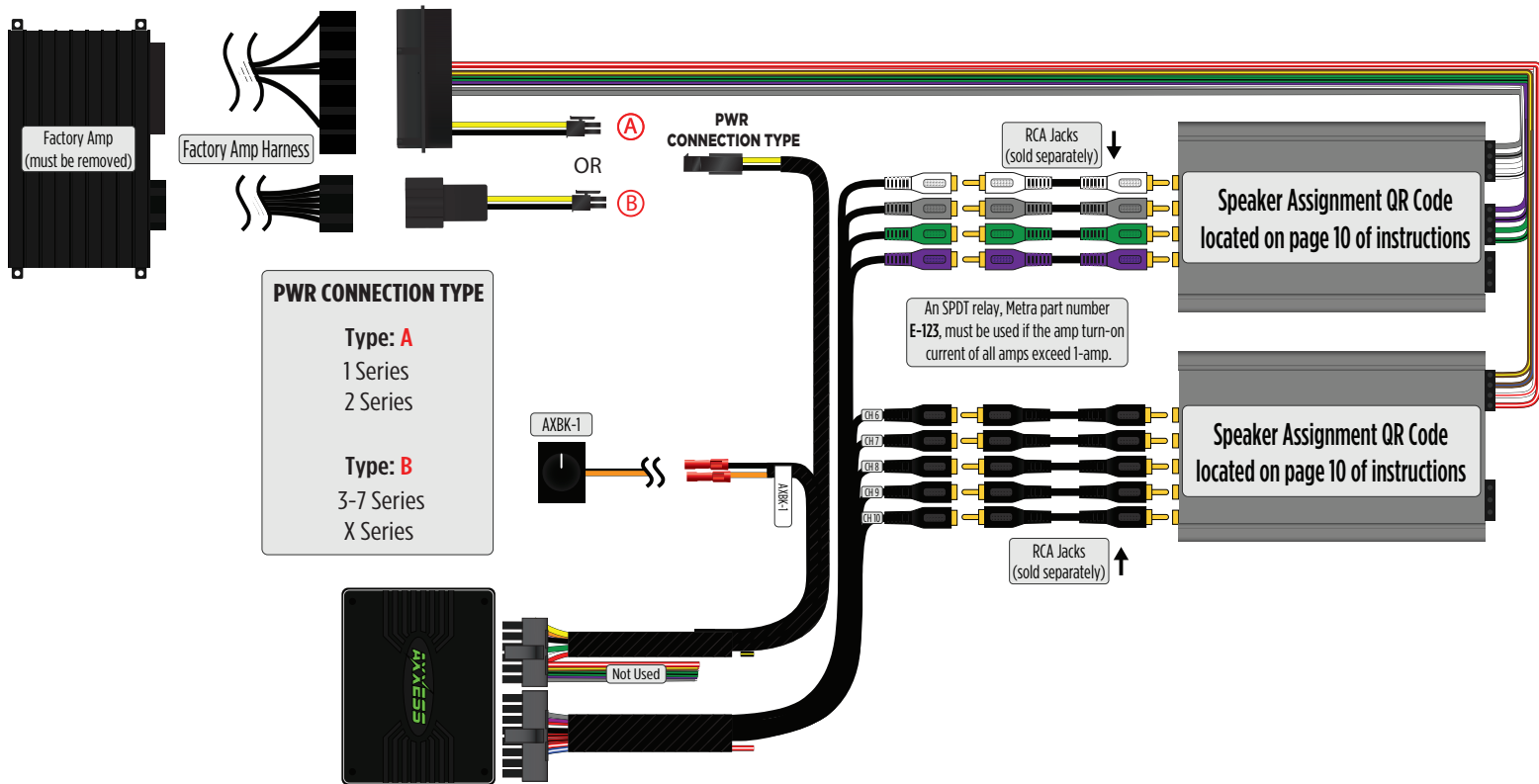
# INTERFACE FEATURES

## INTERFACE FEATURES

---

- Includes a DSP (Digital Signal Processor)
- Designed for MOST® amplified sound systems
- Selectable 31 Band graphic EQ or 5 Band Parametric EQ
- 10 individually assignable outputs
- Independent equalization on each of the 10 outputs
- Independent high pass, low pass, and bandpass filters
- Each channel can be delayed independently up to 10ms
- Clipping detection and limiting circuits
- Bass knob included for level control of subwoofer amp
- Settings adjusted via Bluetooth® in a smart device application (tablet or mobile phone), compatible with both Android and Apple devices
- Read, write, and store configurations for future recall
- Password protect feature available in the mobile app
- Includes an amplifier bypass harness
- Micro-B USB updatable

# CONNECTIONS: ADDING A FULL-RANGE AMP & SUB TO A FACTORY SYSTEM

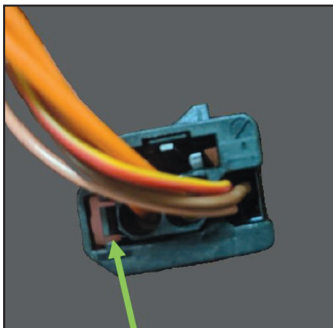


## INSTALLING THE FIBER OPTIC CABLE

### Installing the Fiber Optic Cable:

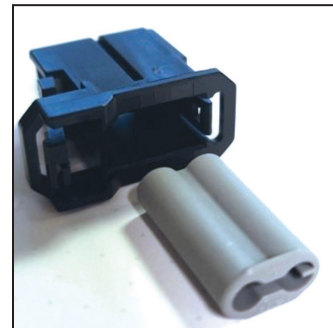
Removal of the original fiber optic connection is required to adapt to the **Media Oriented System Transport (MOST)** interface. The black connector housing uses a different keyway than the MOST interface.

- From the original Fiber Optic Connector: Using a pick tool, carefully pull this tab towards the outside edge for the connector housing. Gently remove the fiber optic insert from the connector. (Figure A)



(Figure A)

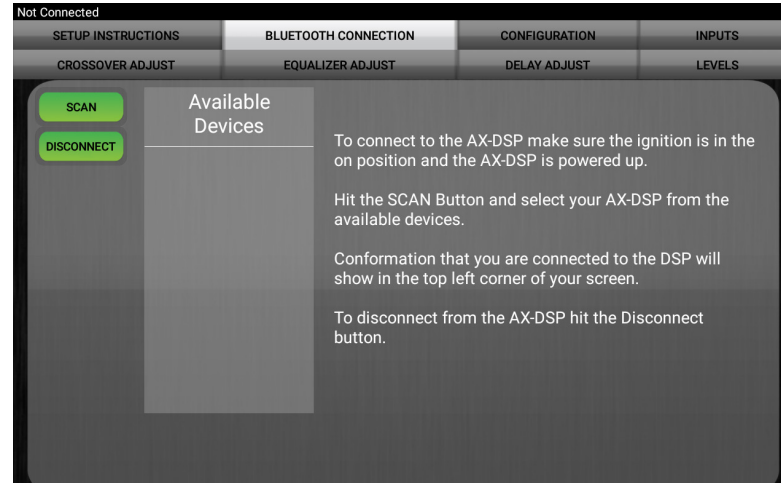
- From the MOST Interface: Using the same steps from above, remove the gray insert from the black fiber optic housing. Replace the gray connector with the fiber optic cables into the MOST interface's black connector housing. (Figure B)
- Plug the MOST connector into the fiber decoder box.



(Figure B)

# INSTALLATION

1. Locate the factory amp in the left side of the trunk, unplug all connectors, then remove the amp.
2. Install the **AXDSPX-BMWM25 harness** and make all necessary connections, but leave the **Blue/White** amp turn-on wire disconnected.
3. Connect the MOST® fiber optic connector removed from the factory amplifier into the **AXDSPX-BMWM25 interface**. For fiber optic connection, please refer to page 8, **Installing the Fiber Optic Cable**.
4. Plug the 12-pin and 16-pin connectors from the **AXDSPX-BMWM25 harness** into the **AXDSPX-BMWM25 interface**.
5. Download and install the **AX-DSP-XL** app from the **Google Play Store** or **Apple App Store** or use the QR code on the cover.
6. Cycle the ignition on.
7. Open the app then select the **Bluetooth Connection** tab. Follow the instructions to pair the mobile device to the interface. (Figure A)

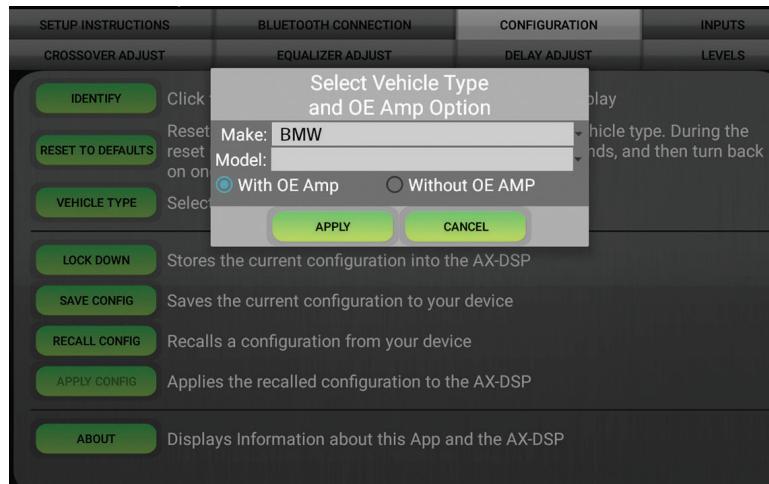


(Figure A)

## INSTALLATION (CONT.)

8. Scroll to the **Configuration** tab then select the vehicle type. Press the **Lock Down** button to save the configuration. (Figure B)
9. Connect the **Blue/White** amp turn-on wire.
10. Click the **Identify** button to confirm the interface is connected properly. A chime will be heard from the front left speaker. Test all functions of the installation for proper operation.
11. Adjust the DSP settings in the app as desired. Refer to the instructions under the **Setup Instructions** tab, or online at [Axxessinterfaces.com](http://Axxessinterfaces.com) for an explanation of each tab in the app.

**Note:** The outputs may need to be configured within the **Outputs** tab.



(Figure B)

# QUICK SETUP STEPS THROUGH AX-DSP-XL APP

## Google Play Store

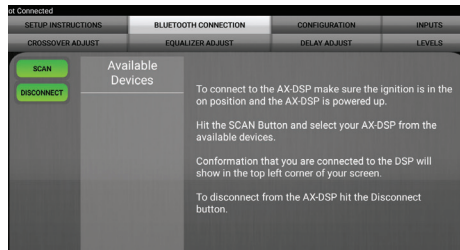


## Apple App Store

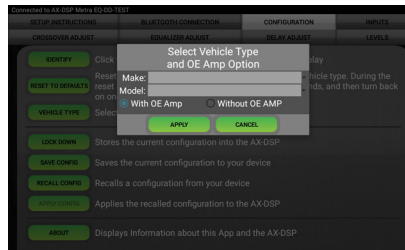
iOS 12.1 or higher



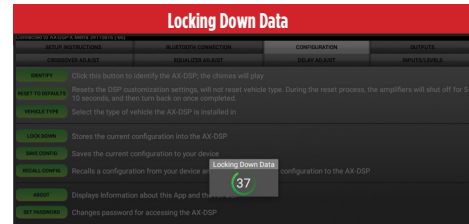
- Download and install the **AX-DSP-XL app** from the **Google Play Store** or **Apple App Store**.
- Turn Vehicle Ignition on. Make sure the Remote Turn on lead is disconnected.
- Open the app: Select **Bluetooth Connections** page.
  - Select **Scan**, all available AXDSP devices within range will be displayed. Select your AXDSP and hit connect. (Figure A)
- Select the Configuration page.
  - Select **Vehicle Type** Icon
  - Select the Vehicle Make: \_\_\_\_\_
  - Select the Vehicle's model: \_\_\_\_\_
  - Select **With OE Amp**
  - Hit **Apply** (Figure B)
- Make sure radio volume is all the way down.
- Connect the amp turn-on wire from the **AXDSPX-BMW25** harness to the aftermarket amplifiers.
- From the **Configuration** page click the **Identify** button to confirm that the **AXDSPX-BMW25** is connected properly. If so, a chime will be heard from the front left speaker.
- Press the **Lock Down** button to save the configuration. (Do not turn ignition off until this process is completed) (Figure C)
- Select the **Bluetooth Configurations** page and disconnect the DSPX.
- Turn ignition off, close all door then lock vehicle using the key fob. The vehicle will need to sit uninterrupted for 10 minutes while the vehicle goes to sleep. (Make sure Key fob is 15 feet away from the vehicle)
- Unlock Vehicle, turn ignition on and test radio's functions.
- Adjust the DSP settings in the app as desired. Refer to the instructions under the **Setup Instructions** tab, or online at [Axessinterfaces.com](http://Axessinterfaces.com) for an explanation of each tab in the app.



(Figure A)



(Figure B)



(Figure C)

**Last and the most important:  
You MUST lock down your configuration and cycle the key!!!**

# SPECIFICATIONS

## Specifications

<b>Input Impedance</b>	1M Ohm
<b>Input Channels</b>	6 High/Low level Selectable
<b>Input Options</b>	High Level or Low Level
<b>Input Type</b>	Differential-Balanced
<b>Input Voltage</b>	
High Level Range	0 - 28v Peak to Peak
<b>Input Voltage</b>	
Low Level Range	0 - 4.9v Peak to Peak
<b>Output Channels</b>	10
<b>Output Voltage</b>	Up to 5v RMS
<b>Output Impedance</b>	50 Ohms
<b>Equalizer Type</b>	31 Band Graphic EQ, +/- 10dB
<b>THD</b>	<0.03%
<b>Frequency Response</b>	20Hz - 20kHz
<b>Crossover</b>	3-Way LPF, BPF, HPF THP per channel
<b>Crossover Type</b>	Linkwitz-Riley 24DB Slope, Fixed
<b>Sampling</b>	48kHz
<b>S/N Ratio</b>	105dB @ 5V RMS

## General

<b>Operating Voltage</b>	10 - 16VDC
<b>Standby Current Draw</b>	-7mA
<b>Operation Current Draw</b>	-150mA
<b>Adjustments/Controls</b>	Application via Bluetooth®
<b>Remote Output</b>	12VDC, Signal Sense or with Ignition



## TROUBLESHOOTING

If the **Red** light in the interface is blinking, it is not communicating with the vehicle.

1. Cycle the key off.
2. Unplug the connectors from the vehicle to the interface.
3. Inspect that all connections are made properly.
4. If everything is correct, connect the harnesses back into the interface, and cycle the ignition on. The **Red** light should now be solid.

## LED FEEDBACK

BLINK RATE	CONDITION/STATUS
LED Heartbeat	BOARD POWERED ON
LED Fade In/Out Slow	CONNECTED TO MOST
LED Fast Flashing	CONNECTED TO BT, NOT CONNECTED TO MOST
LED On	CONNECTED TO MOST & BT
LED SOS Pattern	CORRUPT DSP FILE AND/OR FAILED TO PROGRAM DSP



# AXDSPX-BMWM25

INSTALLATION INSTRUCTIONS

Visit [AxxessInterfaces.com](https://www.AxxessInterfaces.com) for more detailed information about the product and up-to-date vehicle specific applications

Speaker Assignment QR Code



Having difficulties? We're here to help.



Contact our Tech Support line at:

**386-257-1187**



Or via email at:

[techsupport@metra-autosound.com](mailto:techsupport@metra-autosound.com)

### Tech Support Hours (Eastern Standard Time)

Monday - Friday: 9:00 AM - 7:00 PM

Saturday: 10:00 AM - 5:00 PM

Sunday: 10:00 AM - 4:00 PM



**Metra recommends MECP  
certified technicians**