



GENERAL MOTORS 2019-UP ETHERNET DSPX PACKAGE

Visit [AxxessInterfaces.com](https://www.AxxessInterfaces.com) for more detailed information about the product and up-to-date vehicle specific applications

INTERFACE COMPONENTS

- AXDSPX-ETH1 interface
- AXDSPX-ETH1 harness
- LD-DSP-ETH1
- LD-DSP-ETH2
- AXBK-1
- LD-ETH-ADAPT harness
- Amplifier bypass harness (female connectors: 8-pin black, 20-pin green)

Visit [axxessinterfaces.com](https://www.AxxessInterfaces.com) for current application list.

www.MetraOnline.com

MetraOnline.com may be used to assist with dash assembly instructions. Simply enter your Year, Make, Model vehicle into the vehicle fit guide and look for the Dash Kit Installation Instructions.



Google Play Store



Apple App Store
iOS 12.1 or higher



For Dash Disassembly Instructions, refer to [metraonline.com](https://www.MetraOnline.com). Enter the year, make, and model of the vehicle in the Vehicle Fit Guide for Radio Install kits.

TABLE OF CONTENTS

Interface Features.....	2
Connections: Adding A Full-Range Amp & Sub To A Factory System	3-4
Installation	5
Quick Setup Steps: AX-DSP-XL App.....	6
Specifications	7
Troubleshooting.....	8
LED Feedback	8
Speaker Assignment QR Code	8

TOOLS REQUIRED

- Crimping tool and connectors, or solder gun, solder, and heat shrink
- Tape
- Wire cutter
- Zip ties

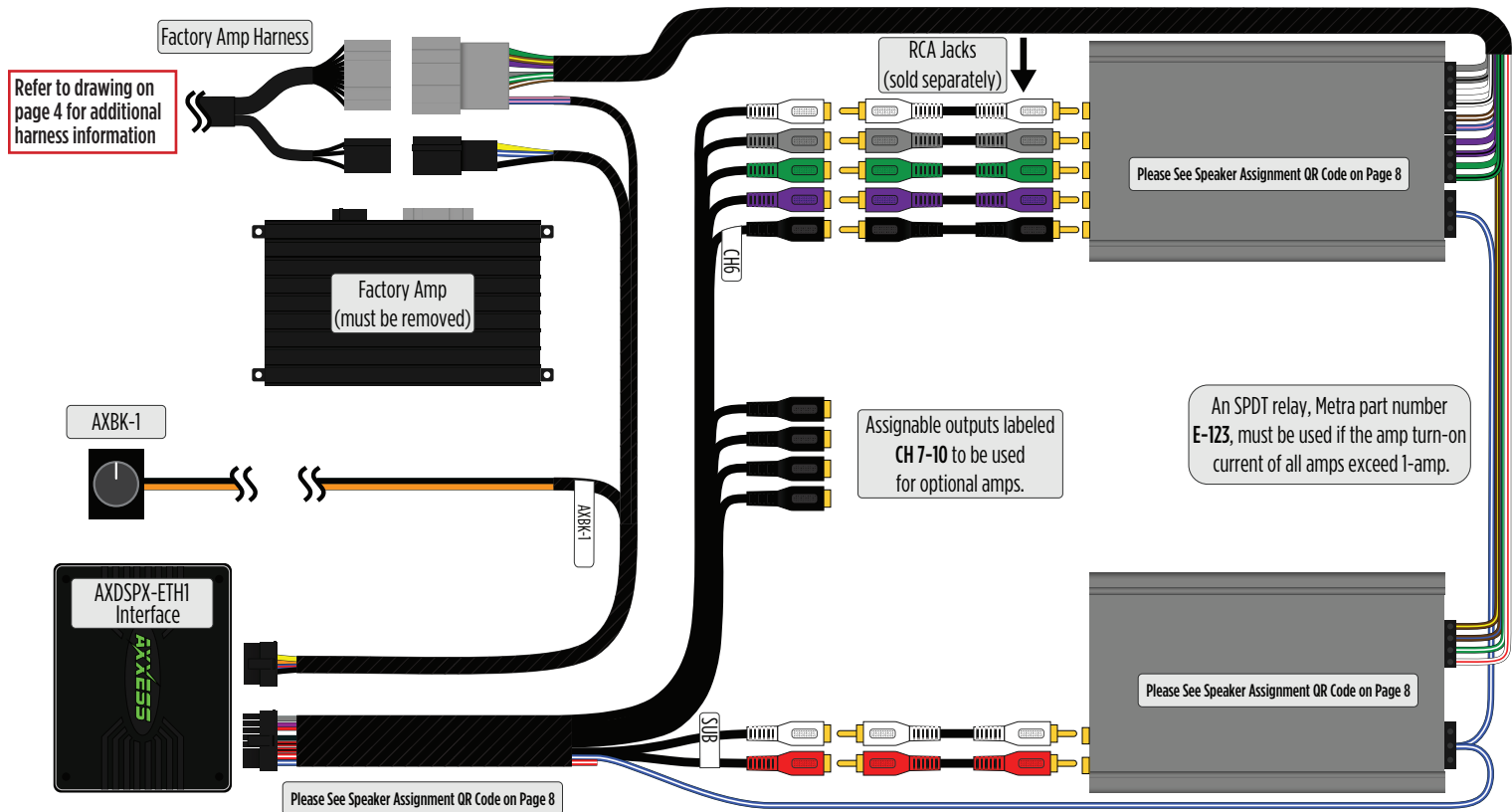
ATTENTION: With the key out of the ignition, disconnect the negative battery terminal before installing this product. Ensure that all installation connections, especially the air bag indicator lights, are plugged in before reconnecting the battery or cycling the ignition to test this product. **NOTE:** Refer also to the instructions included with the aftermarket accessory before installing this device.

INTERFACE FEATURES

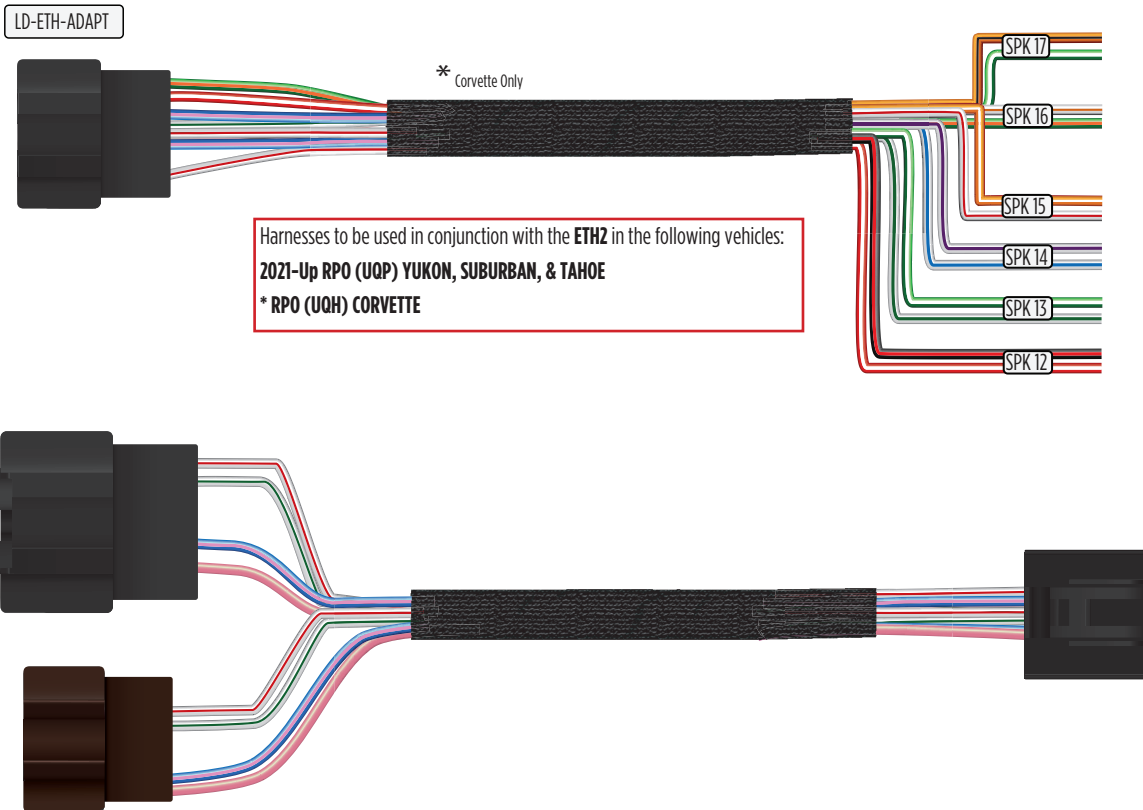
INTERFACE FEATURES

- Designed for GM Ethernet amplifiers
- Ethernet data interface w/AXDSP-X (digital signal processor) built-in
- Includes an amplifier bypass harness
- Retains factory chimes including parking sensor chimes
- Retains vehicle's voice prompts
- Chimes and voice prompts go through the aftermarket amplifier and/or cluster
- Selectable 31 Band graphic EQ or 5 Band Parametric EQ
- 10 individually assignable outputs
- Independent equalization on each of the 10 outputs
- Independent high pass, low pass, and bandpass filters
- Each channel can be delayed independently up to 10ms
- Clipping detection and limiting circuits
- Settings adjusted via Bluetooth® in a smart device application (tablet or mobile phone), compatible with both Android and Apple devices
- Read, write, and store configurations for future recall
- Password protect feature available in the mobile app
- Micro-B USB updatable

CONNECTIONS: ADDING A FULL-RANGE AMP & SUB TO A FACTORY SYSTEM

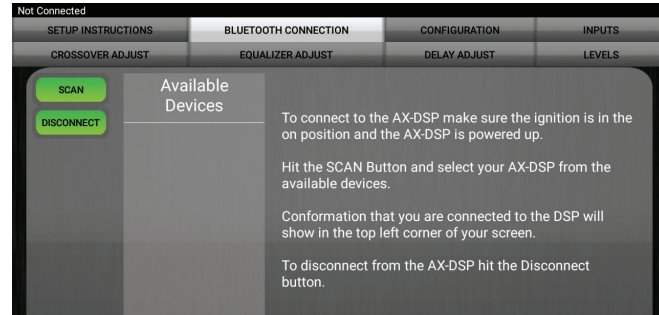


CONNECTIONS: LD-ETH-ADAPT

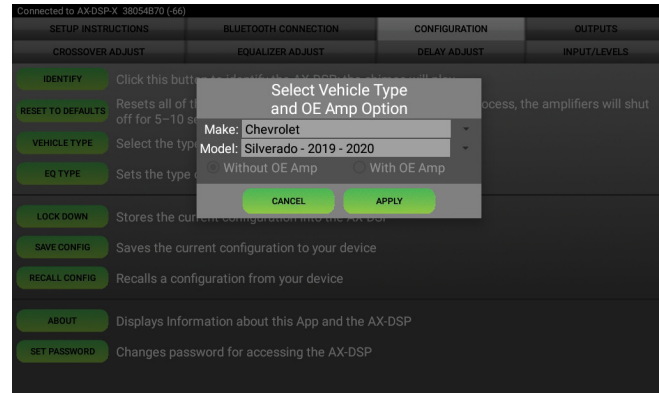


INSTALLATION

1. Locate the factory amp (*), unplug all connectors, then remove the amp.
2. Install the **AXDSPX-ETH1 harness** and make all necessary connections, but leave the amp turn-on wire disconnected.
3. Plug the 8-pin and 16-pin connectors from the **AXDSPX-ETH1 harness** into the **AXDSPX-ETH1 interface**.
4. Download and install the **AX-DSP-XL** app from the **Google Play Store** or **Apple App Store**.
5. Open the app and follow the instructions on the **Bluetooth Connection** tab to pair the mobile device to the **AXDSPX-ETH1**. (Figure A)
6. Scroll to the **Configuration** tab then select the vehicle type. Press the **Lock Down** button to save the configuration. (Figure B)
7. Connect the amp turn-on wire from the **AXDSPX-ETH1 harness**.
8. Click the **Identify** button to confirm that the **AXDSPX-ETH1** is connected properly. If so, a chime will be heard from the front left speaker or gauge cluster. Test all functions of the installation for proper operation.
9. Adjust the DSP settings in the app as desired. Refer to the instructions under the **Setup Instructions** tab, or online at Axessinterfaces.com for an explanation of each tab in the app.



(Figure A)



(Figure B)

QUICK SETUP STEPS THROUGH AX-DSP-XL APP

Google Play Store

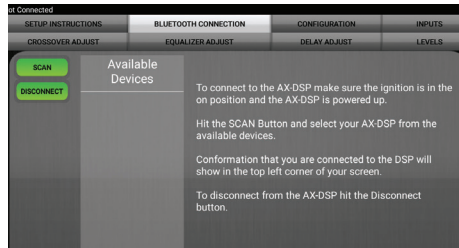


Apple App Store

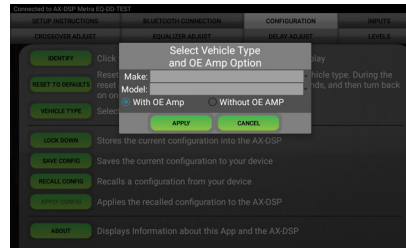
iOS 12.1 or higher



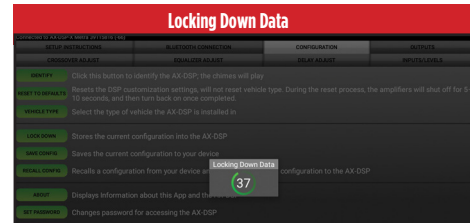
- Download and install the **AX-DSP-XL app** from the **Google Play Store** or **Apple App Store**.
- Turn Vehicle Ignition on. Make sure the Remote Turn on lead is disconnected.
- Open the app: Select **Bluetooth Connections** page.
 - Select **Scan**, all available AXDSP devices within range will be displayed. Select your AXDSP and hit connect. (Figure A)
- Select the Configuration page.
 - Select **Vehicle Type** Icon
 - Select the Vehicle Make: _____
 - Select the Vehicle's model: _____
 - Select **With OE Amp**
 - Hit **Apply** (Figure B)
- Make sure radio volume is all the way down.
- Connect the amp turn-on wire from the **AXDSPX-ETH1** harness to the aftermarket amplifiers.
- From the **Configuration** page click the **Identify** button to confirm that the **AXDSPX-ETH1** is connected properly. If so, a chime will be heard from the front left speaker.
- Press the **Lock Down** button to save the configuration. (Do not turn ignition off until this process is completed) (Figure C)
- Select the **Bluetooth Configurations** page and disconnect the DSPX.
- Turn ignition off, close all door then lock vehicle using the key fob. The vehicle will need to sit uninterrupted for 10 minutes while the vehicle goes to sleep. (Make sure Key fob is 15 feet away from the vehicle)
- Unlock Vehicle, turn ignition on and test radio's functions.
- Adjust the DSP settings in the app as desired. Refer to the instructions under the **Setup Instructions** tab, or online at Axessinterfaces.com for an explanation of each tab in the app.



(Figure A)



(Figure B)



(Figure C)

**Last and the most important:
You MUST lock down your configuration and cycle the key!!!**

SPECIFICATIONS

Specifications

Input Impedance	1M Ohm
Input Channels	6 High/Low Level Selectable
Input Options	High Level or Low Level
Input Type	Differential-Balanced
Input Voltage	
High Level Range	0 - 28v Peak to Peak
Input Voltage	
Low Level Range	0 - 4.9v Peak to Peak
Output Channels	10
Output Voltage	Up to 5v RMS
Output Impedance	50 Ohms
Equalizer Type	31 Band Graphic EQ, +/- 10dB
THD	<0.03%
Frequency Response	20Hz - 20kHz
Crossover	3-Way LPF, BPF, HPF THP per channel
Crossover Type	Linkwitz-Riley 24DB Slope, Fixed
Sampling	48kHz
S/N Ratio	105dB @ 5V RMS

General

Operating Voltage	10 - 16VDC
Standby Current Draw	~7mA
Operation Current Draw	~150mA
Adjustments/Controls	Application via Bluetooth®
Remote Output	12VDC, Signal Sense or with Ignition



TROUBLESHOOTING

If the **Red** light in the **AXDSPX-ETH1** interface is blinking 2 or 3 times every 5 seconds, it is not communicating with the vehicle properly. Remove the key from the ignition, unplug the connectors from the interface, then inspect all connections made. If everything is proper, connect the harnesses back into the interface, cycle the key to ignition, then re-inspect. The **Red** light should blink once every 5 seconds.

LED FEEDBACK

BLINK RATE	CONDITION/STATUS
1 Blink Every 5 Seconds	ALL GOOD
2 Blinks Every 5 Seconds	MISSING ETHERNET FRAMES
3 Blinks Every 5 Seconds	MISSING CAN FRAMES

Visit [AxxessInterfaces.com](https://www.AxxessInterfaces.com) for more detailed information about the product and up-to-date vehicle specific applications

Speaker Assignment QR Code



Having difficulties? We're here to help.



Contact our Tech Support line at:

386-257-1187



Or via email at:

techsupport@metra-autosound.com

Tech Support Hours (Eastern Standard Time)

Monday - Friday: 9:00 AM - 7:00 PM

Saturday: 10:00 AM - 5:00 PM

Sunday: 10:00 AM - 4:00 PM



**Metra recommends MECP
certified technicians**