



Output Generator

Fits Select Ford Models 2014-2024

Visit AxxessInterfaces.com for more detailed information about the product and up-to-date vehicle specific applications

INTERFACE FEATURES

- Provides popular trigger outputs for adding up to eight aftermarket accessories (refer to next page for outputs)
- Outputs configurable via Axxess Updater Program for Windows[®]
- All outputs rated at 250mA
- Simple plug-n-play installation

INTERFACE COMPONENTS

- AXOG-FD2 Interface
- LD-FDCAN GEN2 Harness

APPLICATIONS

Ford	Model	Year Range
Expedition		2018-2021
Maverick		2022-2024
Bronco Sport	2021-2022	
Explorer		2016-2020
Mustang		2015-2023
EcoSport	2018-2021	
F-150		2015-2020
Ranger		2012-2022
Edge	2015-2020	
F-350		2017-2021
Transit		2020-2021
Escape	2020-2021	
Fusion		2014-2020

TABLE OF CONTENTS

Introduction	2
AXXESS Updater Program	2
AXOG Configuration	3
Connection Locations	
Security Gateway Module	4
Connections: LD-FDCANG2 Harness	5
Detailed Instructions	6-7

TOOLS & INSTALLATION ACCESSORIES REQUIRED

- Crimping tool and connectors, or solder gun, solder, and heat shrink
- Tape
- Wire cutter
- Zip ties
- Micro "B" USB cable (Axxess part # AXUSB-MCBL)

ATTENTION: With the key out of the ignition, disconnect the negative battery terminal before installing this product. Ensure that all installation connections, especially the air bag indicator lights, are plugged in before reconnecting the battery or cycling the ignition to test this product.

NOTE: Refer also to the instructions included with the aftermarket accessory before installing this device.

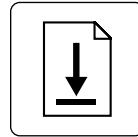
INTRODUCTION

The **AXOG-FD2** allows you to add up to eight accessory outputs to power your radar detector, aftermarket backup camera, or other devices with this output generator.

- Accessory
- Reverse
- Parking brake
- High beam
- Left turn signal
- Right turn signal
- Illumination
- Vehicle speed

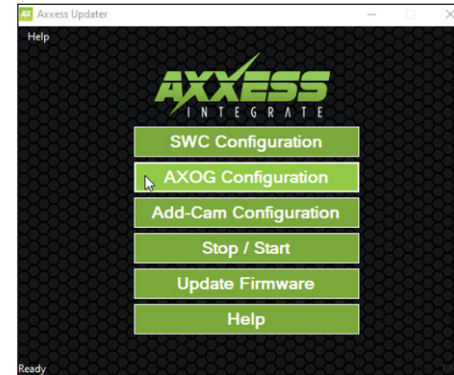
This product is designed to fit 2014-2023 Ford vehicles and is easy to install with plug-n-play wiring. Outputs can be remotely configured using the free downloadable **Axxess Updater Program** for Windows® mobile app for smartphones and tablets.

DOWNLOAD AXCESS UPDATER



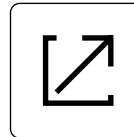
Download and install the **Axxess Updater Program for Windows®** software from: axcessinterfaces.com/resources/updater-software

(Figure A)



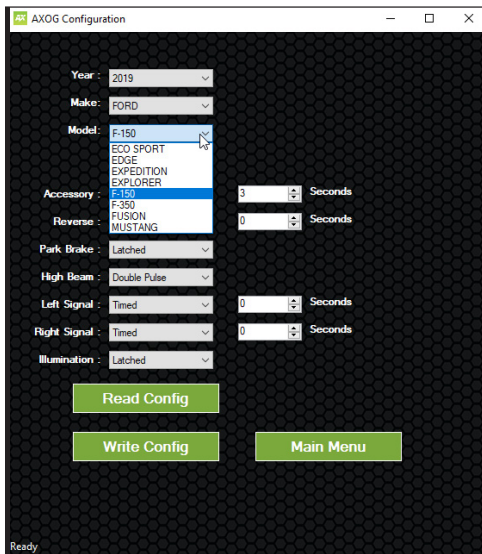
(Figure A) Main Screen

1.

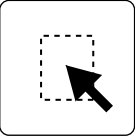


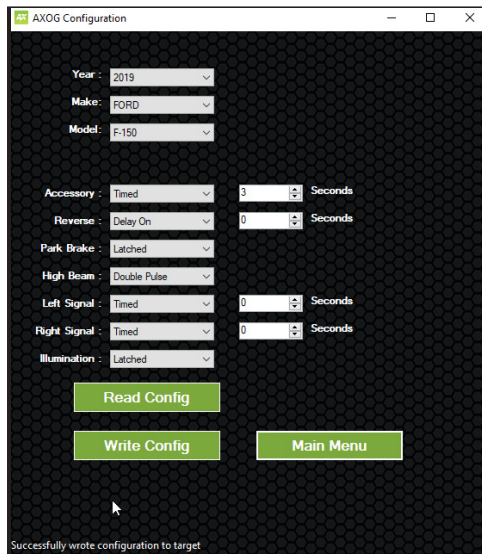
Open the **Axxess Updater Program for Windows®** and wait until the word **Ready** is shown in the bottom left of the screen. Select **AXOG Configuration**. (Figure A)

AXOG CONFIGURATION



(Figure B)

2.  On the next screen that opens, select the year, make, and model of the vehicle, then configure your outputs being used. Connect the micro-B USB cable (sold separately) to the computer and AXOG-FD2 interface, then press **“Write Config”** (Figure B)



(Figure C)

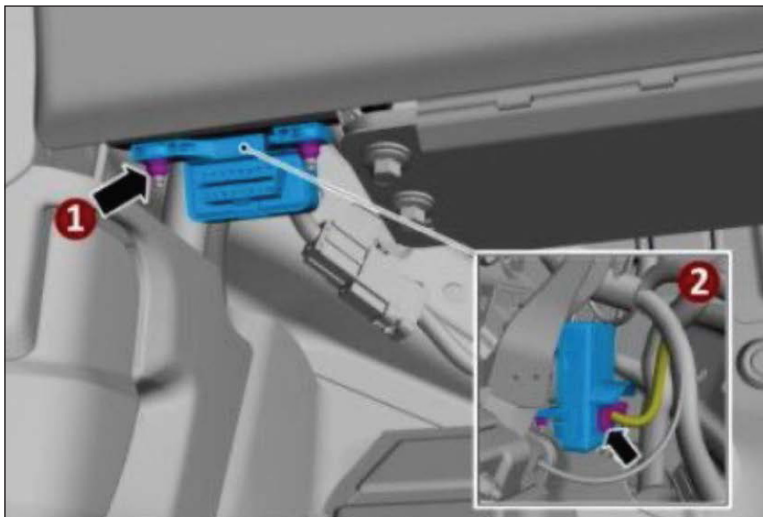
3.  Once chosen outputs have been programmed you will get confirmation on the bottom left saying **“Successfully wrote configuration to target.”** (Figure C)

CONNECTION LOCATIONS

These vehicle's **Security Gateway Module** (refer to vehicle's applicable harness used).

Security Gateway Connections

The Security Gateway for the vehicles below are located on Driver's side behind OBD2 connector.



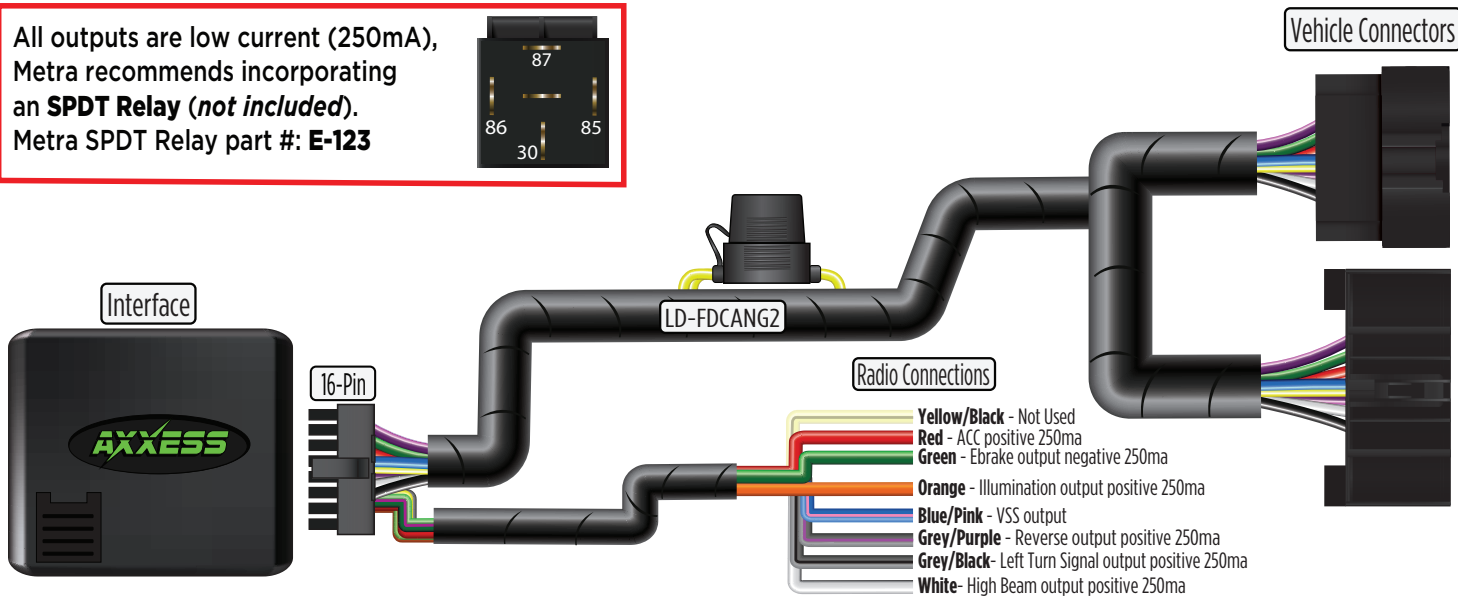
This is the view of the front of the **Security Gateway Module**.

APPLICATIONS

Ford			
Bronco Sport	2021-2022	Expedition	2018-2021
EcoSport.....	2018-2021	Explorer	2016-2020
Edge.....	2015-2020	F-150.....	2015-2020
Escape	2020-2021	F-350.....	2017-2021
		Fusion	2014-2020
		Maverick	2022-2024
		Mustang.....	2015-2023
		Ranger	2012-2022
		Transit.....	2020-2021

CONNECTIONS:LD-FDCANG2 HARNESS

All outputs are low current (250mA),
Metra recommends incorporating
an **SPDT Relay (not included)**.
Metra SPDT Relay part #: **E-123**



DETAILED INSTRUCTIONS: AXCESS UPDATER PROGRAM FOR WINDOWS®

Download and install the **Axcess Updater Program for Windows®** from: axcessinterfaces.com/resources/updater-software

AXOG Configuration

1. After selecting “**AXOG CONFIGURATION**” (Figure A) the main portion of the screen will show a description of the mode, as well as descriptions of each of the settings to configure. (Figure B)
2. Select year, make and model of the vehicle being worked on. Adjust the settings with the number selectors on the right side of the screen. (Figure C)

3. Configure the outputs that are being used:

Timed: When the selected output is triggered, the output will turn on and stay on for the programmed time (0-1000 seconds).

Latched-Ignition: When the selected output is triggered, the output will turn on and stays on continuously until the ignition is cycled.

Latched-CAN: When the selected output is triggered, the output will turn on and stays on continuously until the output is triggered to OFF.

Delay On: When the selected output is triggered, the output will turn on after the designated time has expired. (0-1000* seconds)
* Reverse has a max timer of 120 seconds

Delay Off: When the Delay Off output is selected, the output will remain on for the programmed duration time (0-1000* seconds).

Double Pulse:** When the high beam is toggled twice within 3 seconds, the output will turn on and stay on continuously until the high beam is toggled 2 more times.

4. Read Config: Reads the current configuration from the AXOG.

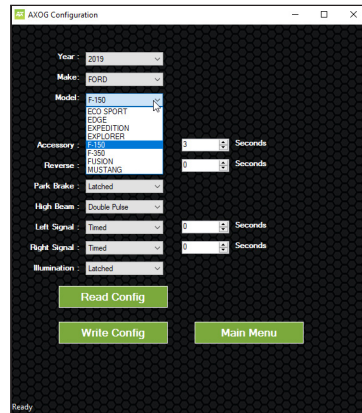
5. Write Config: Writes the current configuration to the AXOG.

6. Main Menu: Returns to the main menu
Below is a list of programmable outputs that can be set.

Accessory	Reverse	Right Signal
Park Brake	**High Beam	Left Signal
Illumination		



(Figure A)



(Figure B)



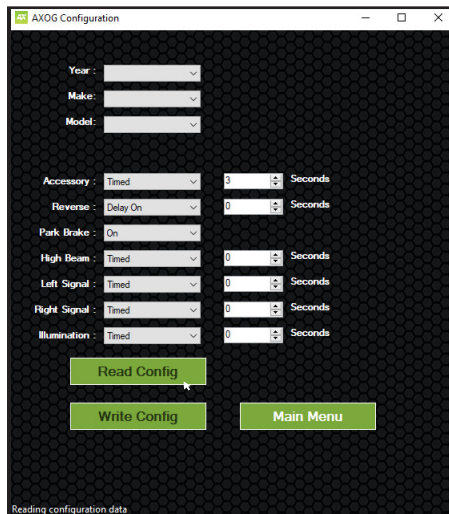
(Figure C)

Once the chosen outputs have been programmed, hit the “**Write Config**” Tab. Wait for confirmation of items written to target (Figure C) this will pop up. “**Successfully wrote configuration to target.**”

Reading Configuration on Board

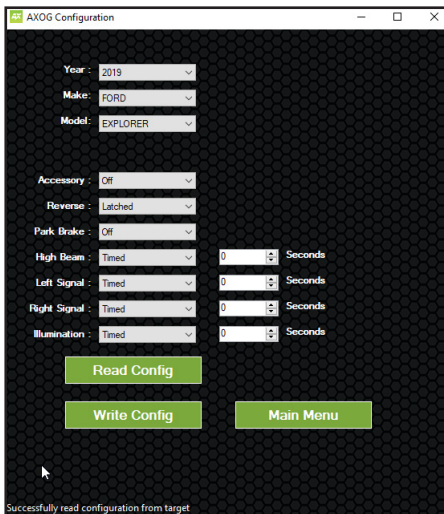
Go into the **AXOG CONFIGURATION** and hit enter

Enter **“Read Config”** and connect micro USB to board. (Figure D)



(Figure D)

“Reading configuration data”



(Figure E)

When **“Successfully read configuration from target”** pops up, your saved parameters will show.



Having difficulties? We're here to help.



Contact our Tech Support line at:

386-257-1187



Or via email at:

techsupport@metra-autosound.com

Tech Support Hours (Eastern Standard Time)

Monday - Friday: 9:00 AM - 7:00 PM

Saturday: 10:00 AM - 5:00 PM

Sunday: 10:00 AM - 4:00 PM



**Metra recommends MECP
certified technicians**