



Dodge/Jeep Stop/Start Override Interface 2018-Up

INTERFACE FEATURES

- Allows the override of the STOP/START engine feature
- The factory STOP/START button can resume the STOP/START feature
- Can be used with either a factory or aftermarket radio
- Vehicle type configured through the Axxess Updater software program
- Simple plug n' play installation, no wiring required

INTRODUCTION

The AXSSO-CH2 is designed to disengage the STOP/START feature of the vehicle, and keep that feature disengaged even after the key has been cycled. The AXSSO-CH2 will work with either an aftermarket radio, or a factory radio. A simple plug n' play installation is all that is required to install the device in the vehicle, and programming through a Windows 10 computer via the [Axxess Updater](#) software program.

APPLICATIONS

Dodge		Jeep	
Durango	2018-Up	Cherokee	2019-Up
		Grand Cherokee	2018-Up

TABLE OF CONTENTS

Programming.....	2
Connections.....	3
Operation.....	3

INTERFACE COMPONENTS

- AXSSO-CH2 interface
- AXSSO-CH2 harness

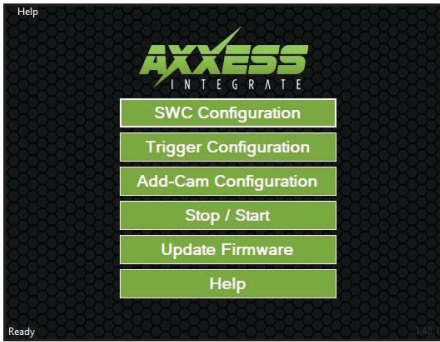
TOOLS & INSTALLATION ACCESSORIES REQUIRED

- Zip ties • Cutters (for zip ties)
- Micro-B USB cable
 (Axxess part number **AXUSB-MCBL**)

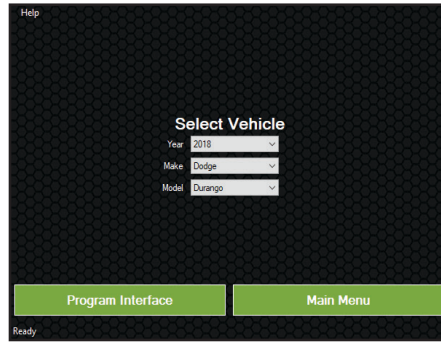
Product Info



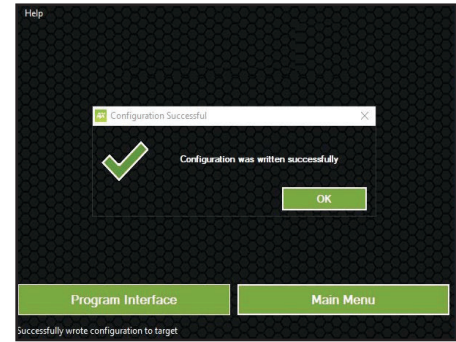
PROGRAMMING



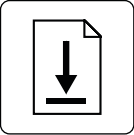
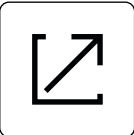
(Figure A)

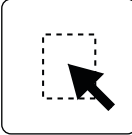



(Figure B)



(Figure C)

-  Download and install the **Axxess Updater** software program from: axcessinterfaces.com/resources/updater-software
-  Connect the micro-B USB cable (sold separately) to the computer and AXSSO-CH2 interface. Open the **Axxess Updater** software program and wait until the word **Ready** is shown in the bottom left of the screen. Select **Stop / Start**. (Figure A)

-  On the next screen that opens, select the year, make, and model of the vehicle, then press **Program Interface**. (Figure B)
-  When the **Configuration Successful** box pops up, the programming process is complete. (Figure C)

Continue to Installation

INSTALLATION

These vehicles will connect to the hazard switch in the dashboard.

Dodge

Durango 2018-Up

- Disassembly instructions: metraonline.com/part/99-6537B

Jeep

Cherokee 2019-Up

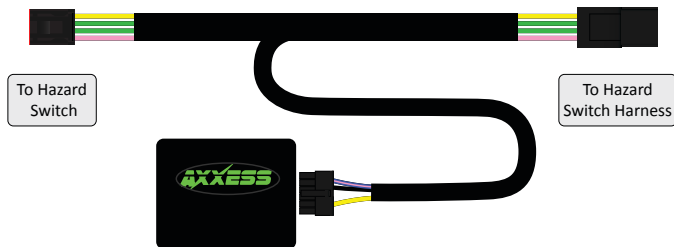
- Disassembly instructions: metraonline.com/part/99-6518

Grand Cherokee 2018-Up

- Disassembly instructions: metraonline.com/part/99-6536S

From the hazard switch:

1. Unplug the connector from the hazard switch.
2. Plug the AXSSO-CH2 harness in between the **hazard switch** and **hazard switch harness**.
3. Plug the AXSSO-CH2 harness into the AXSSO-CH2 interface.



OPERATION

Re-engaging the STOP/START feature

1.



Press the factory STOP/START button to re-engage the STOP/START feature.



AXSSO-CH2

INSTALLATION INSTRUCTIONS

Having difficulties? We're here to help.



Contact our Tech Support line at:

386-257-1187



Or via email at:

techsupport@metra-autosound.com

Tech Support Hours (Eastern Standard Time)

Monday - Friday: 9:00 AM - 7:00 PM

Saturday: 10:00 AM - 7:00 PM

Sunday: 10:00 AM - 4:00 PM



KNOWLEDGE IS POWER

Enhance your installation and fabrication skills by enrolling in the most recognized and respected mobile electronics school in our industry. Log onto www.installerinstitute.edu or call 386-672-5771 for more information and take steps toward a better tomorrow.



**Metra recommends MECP
certified technicians**