



## Harley-Davidson Cut-In Saddlebag Lids 2014-2023 HD Hard Saddlebags

Visit [MetraOnline.com](https://www.metraonline.com) for more detailed information about the product and up-to-date vehicle specific applications

### KIT FEATURES

- Saddlebag Lids let you add speakers to your factory bag lids on select 2014-2023 Harley-Davidson® Touring models with hard bags
- Easy install with cut template, and harnessing
- Injection molded plastic, and metal stamped grill for stylish look
- 6"x9" unloaded saddlebag cut-in kit Injection-molded plastic with textured surface

### What's In the Box

• (A) Cut Template • (B) Tweeter Plate • (C) Speaker Grill • (D) Speaker Mount

**Not Shown:** Saddlebag speaker harness • Hardware 10-32 x 1/2" Machine Screws • Tweeter mounting screws

• 6" Zip-ties • Adhesive backed Zip-tie mounts

A



B



C



D



### TABLE OF CONTENTS

Preparation .....	2-3
Grille Installation.....	4-5
Speaker Installation.....	6-7
Harness Routing and Installation.....	8

### RECOMMENDED TOOLS

- Oscillating cutting tool • 3/4" step bit and drill
- Also: Hole saw



## CUT-IN BAG LID INSTRUCTIONS: KIT PREPARATION

The installation of the cut-in bag lid kits can be accomplished without fully disassembling the bag lid.

These steps will show how to install the kit with the saddlebag removed from the bike.

1. With the saddlebag removed from the bike, set it on a surface so paint will not be damaged.
2. Use painters tape (blue or green) to cover the entire front edge of the bag lid, extend the tape 2/3 of the way down the bag lid. Figures (A1 & A2)
3. Remove the cut templates from the kit. Place the template on the bag lid, there are feet that rest on the lip of the bag lid. Once placement is correct, use the supplied screws and secure template into place. Figure (B)
4. Use a pencil or marker, trace the cut-line of the template onto the taped lid.

**NOTE:** We recommend using an Oscillating tool.

5. With a cutting tool, cut the marked line and cutting through the template as you go. Figure (C)
6. When cutting the front and outside edge, hold tool parallel to the floor. Figure (D)

*Continued on next page*



(Figure A1)



(Figure A2)



(Figure B)



(Figure C)



(Figure D)

## CUT-IN BAG LID INSTRUCTIONS: KIT PREPARATION *(CONT)*

7. Remove the cut out, and using a file or sandpaper, clean up the edge of the bag lid till smooth and flat. Figure (A)

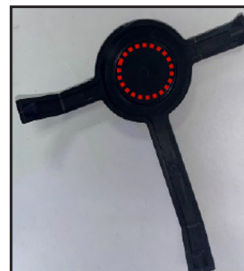
### Optional Tweeter plate:

1. To install a tweeter, you will need a hole saw that is the correct diameter for the tweeter. Figure (B)
2. Center hole saw and make cut, using tweeter hardware install into hole.
3. Using (3) small screws (per side), locate holes in mounting plate, and install tweeter bracket. Figure (C)

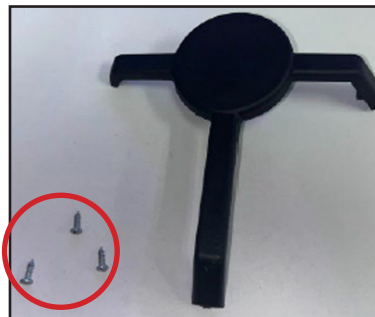
**NOTE:** The tweeter plate needs to be installed prior to installing mounting plate.



(Figure A)



(Figure B)



(Figure C)



(Figure D)

## CUT-IN BAG LID INSTRUCTIONS: GRILLE INSTALLATION

1. Remove the painter's tape, and place the grille over the lid. Make sure the outside edges of the grille sit flush to the top of the bag lid. (Figure A)
2. Prior to attaching the inner speaker mounting plate to the grille, apply the provided foam tape (Figure B) to the full surround of the speaker mounting plate. (Figures C & D) This will help create a better seal to the saddlebag lid.

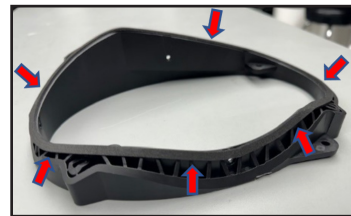
We recommend reserving a small piece of the same foam tape and applying it to the notch for the tweeter wiring (if a tweeter is not being installed). (Figure E)



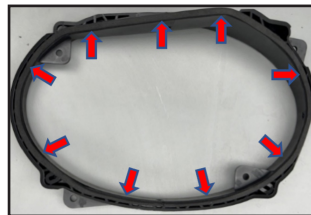
(Figure A)



(Figure B)



(Figure C)



(Figure D)



(Figure E)

*Continued on next page*

## CUT-IN BAG LID INSTRUCTIONS: GRILLE INSTALLATION CONT.

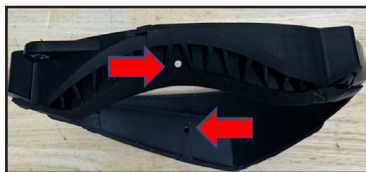
3. We recommend covering the pre-drilled holes used to mount the tweeter plate if not in use. (Figures F & G)
4. Apply the supplied gasket for the 6x9 speaker to the speaker mounting plate. (Figures H & I)
5. Open the bag lid, and hold the outer grille in place. Insert the inner speaker mounting plate, using the supplied hardware. Install and secure the (4) screws into the grille. (Figure J)

**NOTE:** The bag lid will be sandwiched in between grille and mounting plate.

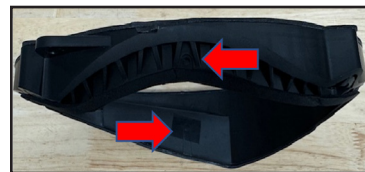
6. Install the 6x9 (not included) onto mounting plate, using the hardware with speakers. (Figure K)

**NOTE:** Speaker terminals should point to the center of the saddlebag.

*Continue to Speaker Installation*



(Figure F)



(Figure G)



(Figure H)



(Figure I)



(Figure J)



(Figure K)

## CUT-IN BAG LID INSTRUCTIONS: SPEAKER BAG INSTALLATION

### LD-9723 Bag Installation

**NOTE:** We recommend using a 3/4" step drill bit.

1. Measure 1.25" down from the saddlebag edge, in between bag mount and lid lock. (Figure A)
2. Using a step bit, drill 3/4" hole into the saddlebag. (Figure B)

*Continued on next page*



(Figure A)



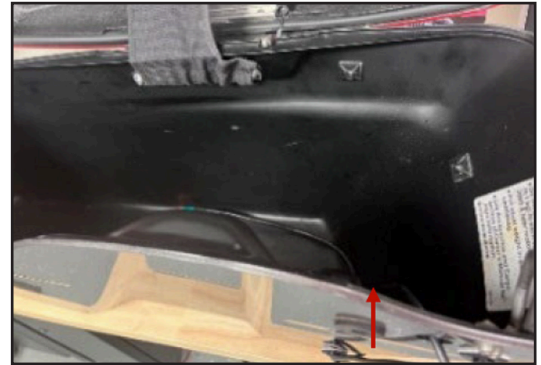
(Figure B)

## CUT-IN BAG LID INSTRUCTIONS: SPEAKER BAG INSTALLATION CONT.

3. Insert harness into saddlebag from exterior, spade terminal first. (Figure C)
4. Insert harness grommet into the saddlebag, ensuring that **both sides of the grommet are flared out over the drilled hole securely.** (Figure D)
5. Reinstall the saddlebag, connect bike side Quick Connect from the LD-9723 harness.
6. With the wire inserted, route the speaker wire, using wire ties and wire tie mounts to keep wire away from items to be placed in saddlebag. (Figure E)



(Figure C)



(Figure D)

*Continue to Speaker Harness Routing & Installation*



(Figure E)

# CUT-IN BAG LID INSTRUCTIONS: SPEAKER HARNESS ROUTING AND INSTALLATION

## LD-9723 Routing and Installation

1. Remove the **Gas Tank, Seat, Front Fairing**, and the **Snap-on Backbone Cover**.

**NOTE:** This information can be found in a repair guide or manufacturer's service manual

2. Route wires up backbone, using factory loom as a guide. Pass wires to the radio/amplifier inside front fairing. (Figure A)
3. This harness can be hard wired to the radio, or amplifier if installed.

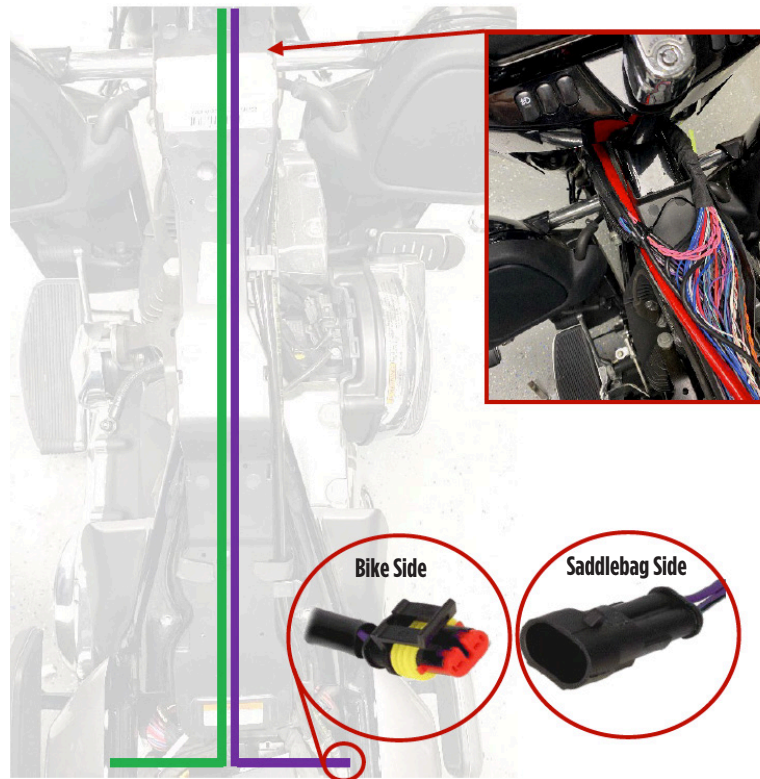
**Purple w/Black:** Brake rear negative

**Purple:** Brake rear positive

**Green w/Black:** Belt rear negative

**Green:** Belt rear positive

4. With the wires connected, place the backbone cover back on the factory loom channel. Reinstall the front fairing, gas tank, and seat.
5. Connect the **Saddlebag Harness** to the **Bike Side Harness**.



(Figure A)



# THANK YOU FOR YOUR *SaddleTramp* PURCHASE



**If you have any questions,**  
comments, or feedback on the product,  
please **contact our tech support**  
via email:  
**[techsupport@metra-autosound.com](mailto:techsupport@metra-autosound.com)**

**DON'T FORGET** to Visit  
**[MetraPowerSports.com](http://MetraPowerSports.com)**  
to view the installation **parts and**  
**Motorcycle accessories** available.

Having difficulties? We're here to help.



Contact our Tech Support line at:

**386-257-1187**



Or via email at:

[techsupport@metra-autosound.com](mailto:techsupport@metra-autosound.com)

### **Tech Support Hours (Eastern Standard Time)**

Monday - Friday: 9:00 AM - 7:00 PM

Saturday: 10:00 AM - 5:00 PM

Sunday: 10:00 AM - 4:00 PM

Closed for most US Federal Holidays



**Metra recommends MECP  
certified technicians**