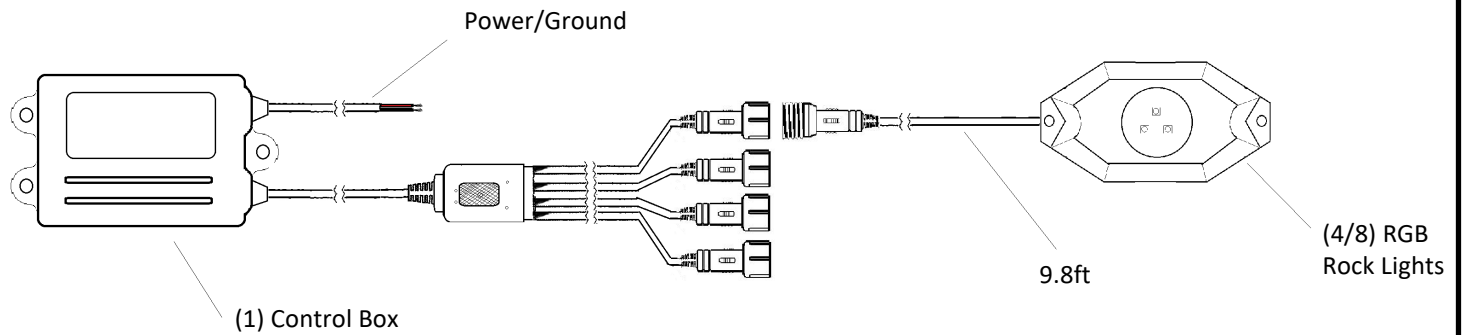


DAYTONA LIGHTS™

DL-RGB4KT / DL-RGB8KT



- 1) Mount control box in a safe dry location. Check clearance before screwing into surface.
- 2) Mount rock lights, 2 different bases are supplied for flat and curved surfaces. Check clearance before screwing into surface. Note cable length is 9.8 feet.
- 3) Connect lights to control box and tighten connections. Avoid pinch points when routing the cables.
- 4) Connect loose leads of control box. Red wire to switched +12VDC, and the black wire to chassis ground.
- 5) Scan QR code to download and install app.

1.Home Screen

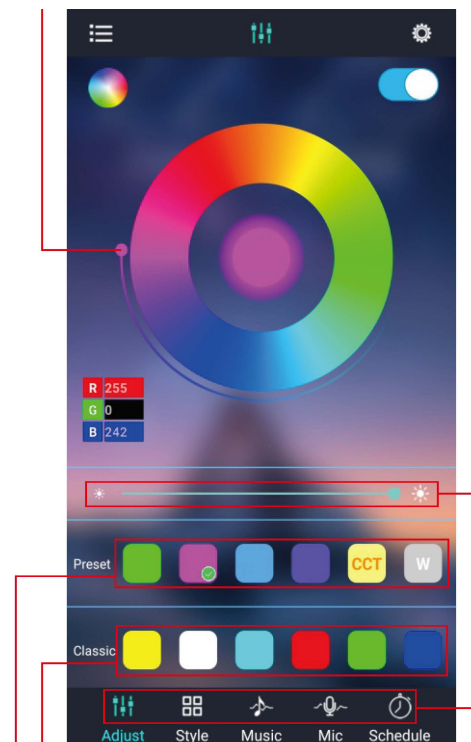
RGB Color Selector

Brightness Adjuster

Lotus Lantern App



Scan to download smartphone app



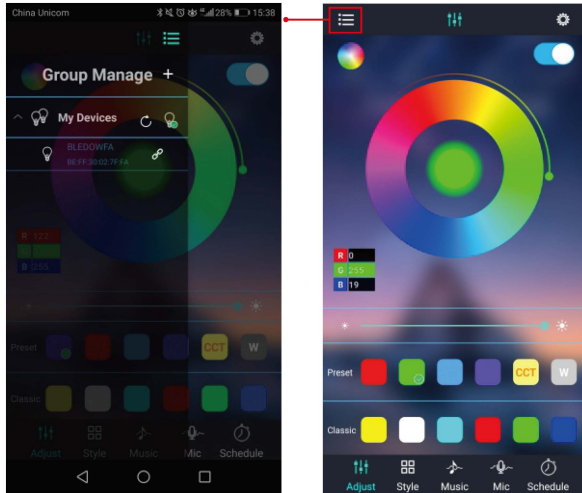
Frequently used colors will appear and save in the top 'Preset' bar. Pre-selected colors will remain on the lower 'Classic' bar.

Function Menu

DAYTONA LIGHTS™

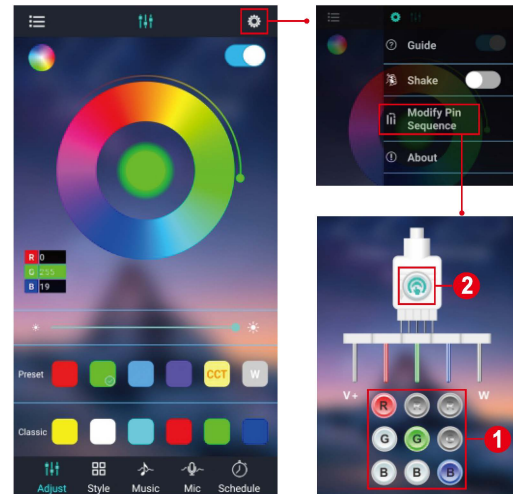
2. Group Manage Menu

Select the top left corner to bring out the Group Manage Menu. Find and select the controller to pair. Bluetooth on the smart device must be switched on.



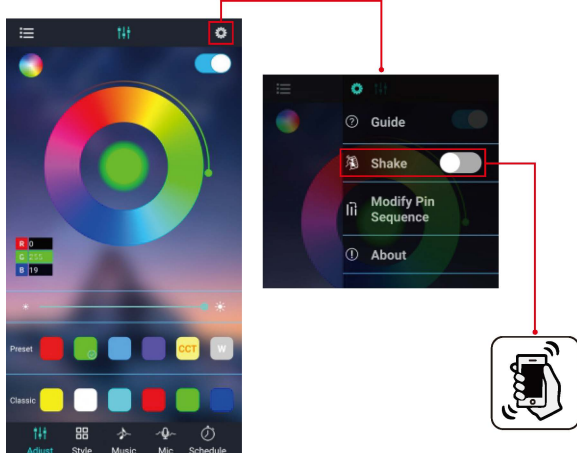
4. Modify Pin Sequence

If red, green, and blue do not match the rock light illumination, the Pin Sequence, in the settings menu, can be used to reconfigure the outputs (1). Click (2) to save when configuration is completed.



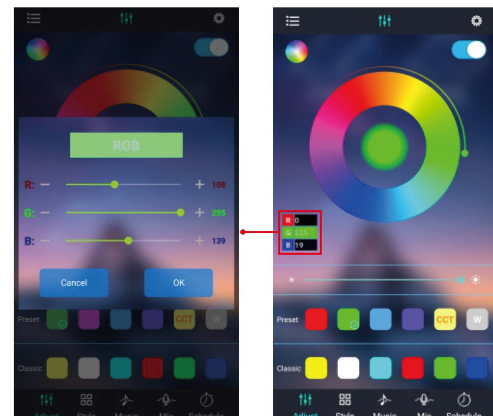
3. Shake Selection

Select the top right corner to bring out the Settings Menu. The shake feature will randomly select a color every time your phone is shaken.



5. RGB Value Selector

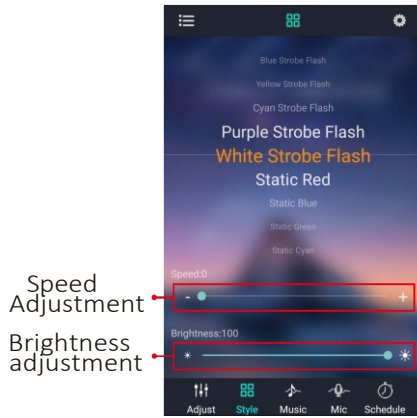
1. Click to open the RGB Value Selector.
2. Slide the R - G - B bar to change the RGB value, or press the minus '-' or plus '+' buttons to change the RGB value.
3. Each color has a range of 0 to 255.
4. Click 'Cancel' or 'OK' when setup completed.



DAYTONA LIGHTS™

6. Style

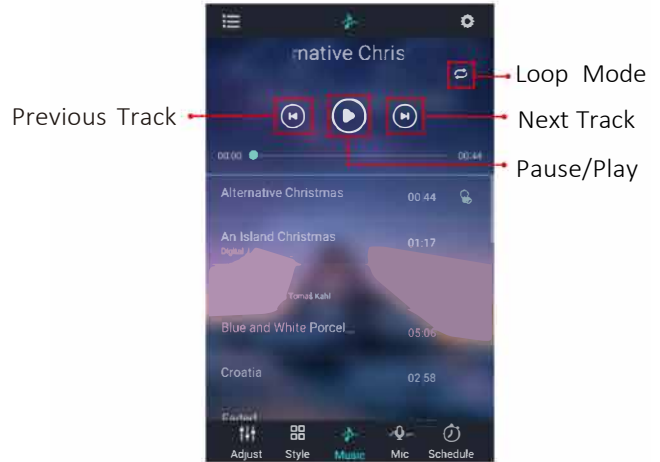
Select the Style button at the bottom to bring out the pattern menu. This menu allows you to select from a variety of functions, including static colors, strobe, and fade. Speed and brightness can be adjusted with the lower sliders.



Speed Adjustment
Brightness adjustment

7. Music

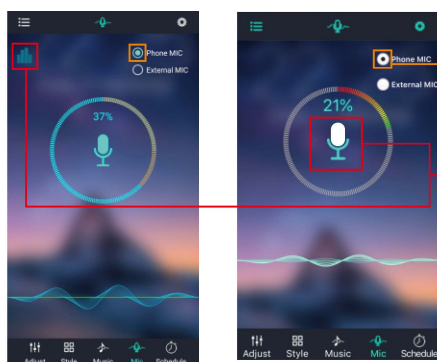
Select the Music button to play locally stored music which the lights will sync to. The brightness and colors will randomly changed base on the music.



Loop Mode
Previous Track
Next Track
Pause/Play

8. Mic

Select the Mic button at the bottom to bring out the Microphone menu. Using the devices built-in microphone, or external microphone, the lights will adjust the brightness in sync with the volume of the audio detected.



Select The Mode
Sound Recording

Android

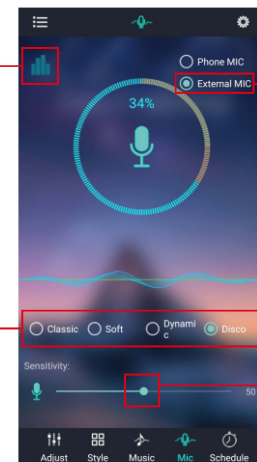
iOS

Enable or disable the rhythm function

Select the music rhythm

Select the mic source

Slide the progress bar to adjust the sensitivity



Legal Information

§15.19

This device complies with part 15 of the FCC Rules. Operation is subject to the following two conditions:

- (1) This device may not cause harmful interference,
- (2) This device must accept any interference received, including interference that may cause undesired operation.

§15.21

The users manual or instruction manual for an intentional or unintentional radiator shall caution the user that changes or modifications not expressly approved by the party responsible for compliance could void the user's authority to operate the equipment. In cases where the manual is provided only in a form other than paper, such as on a computer disk or over the Internet, the information required by this section may be included in the manual in that alternative form, provided the user can reasonably be expected to have the capability to access information in that form

§15.105

NOTE: This equipment has been tested and found to comply with the limits for a Class B digital device, pursuant to Part 15 of the FCC Rules. These limits are designed to provide reasonable protection against harmful interference in a residential installation. This equipment generates, uses and can radiate radio frequency energy and, if not installed and used in accordance with the instructions, may cause harmful interference to radio communications. However, there is no guarantee that interference will not occur in a particular installation. If this equipment does cause harmful interference to radio or television reception, which can be determined by turning the equipment off and on, the user is encouraged to try to correct the interference by one or more of the following measures:

- Reorient or relocate the receiving antenna.
- Increase the separation between the equipment and receiver.
- Connect the equipment into an outlet on a circuit different from that to which the receiver is connected.
- Consult the dealer or an experienced radio/ TV technician for help.

FCC Radiation Exposure Statement:

This equipment complies with FCC radiation exposure limits set forth for an uncontrolled environment. This equipment should be installed and operated with minimum distance 20cm between the radiator & your body.