

Jeep Wrangler JL 2018-UP* Replacement Camera Kit

*Visit Metraonline.com for more detailed information about the product and up-to-date vehicle specific applications.



Product Features

- Designed to replace the LVDS camera on Jeep Wranglers
- Direct OE replacement
- ABS housing
- Resolution: 500 TV lines
- Viewing Angle: 160 degrees

Part Components

A) Camera B) Housing Front/back C) Harness and Hardware

A



B



C



TABLE OF CONTENTS

Camera Removal.....	2-4
Assembly	5
Wiring	6
Specifications	7

TOOLS REQUIRED

- 3/16 Allen bit
- Phillips bit
- Reciprocating saw or other cutting device

Attention! When testing the aftermarket equipment, ensure that all factory equipment is connected before cycling the key to ignition.

CAMERA REMOVAL

1. Remove the interior panel. It is held on with panel clips. (Figure A)
2. Disconnect the two connectors shown. (Figure B) Pop out the grommet behind these two connectors and run the harness outside. This will allow easier access when removing the spare tire mount from the vehicle. Retain this harness as it will still be needed for the third brake light.



Figure A



Figure B

CAMERA REMOVAL (CONT.)

1. Remove the bolts holding the tire onto the back of the tailgate.
2. To remove the camera it is easiest to remove the spare tire mount from the tailgate. Remove the four 14mm bolts from the mount to remove it from the tailgate. (Figure A)
3. Disconnect any wiring and remove the mount from the tailgate. Remove the two T-25 torx to release the camera mount from the spare tire mount. (Figure B)

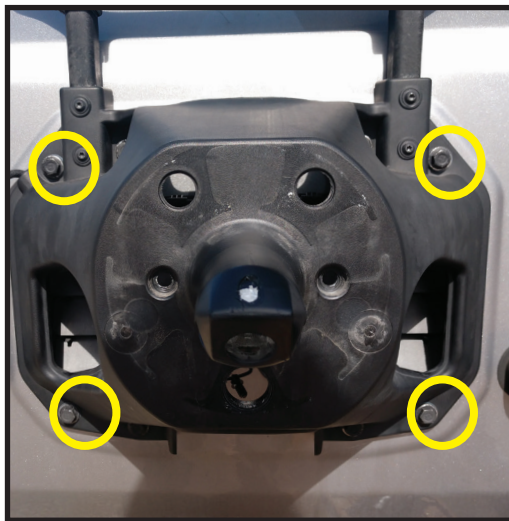


Figure A



Figure B

CAMERA REMOVAL (CONT.)

1. Use the 3 bolts to help push the camera mount out of the back of the spare tire mount. Push the bolts down. Some force may be needed.
2. Remove the three T-8H torx screws to remove the camera from the mount. (Figure B)
3. Unplug the camera from the spare tire harness and keep the harness. This will still be needed for the brake light. Tape back and secure the camera connector if the need arrives to go back to the factory camera.

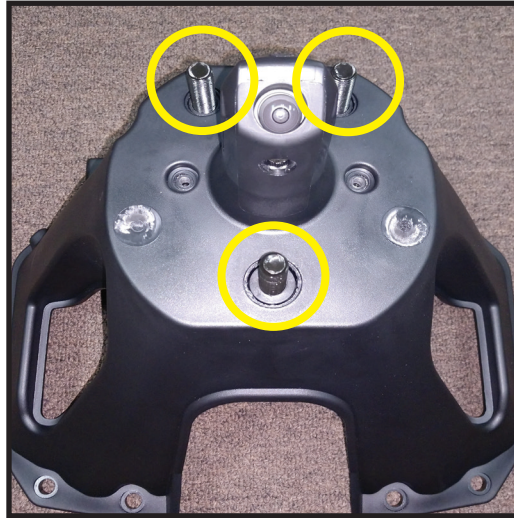


Figure A

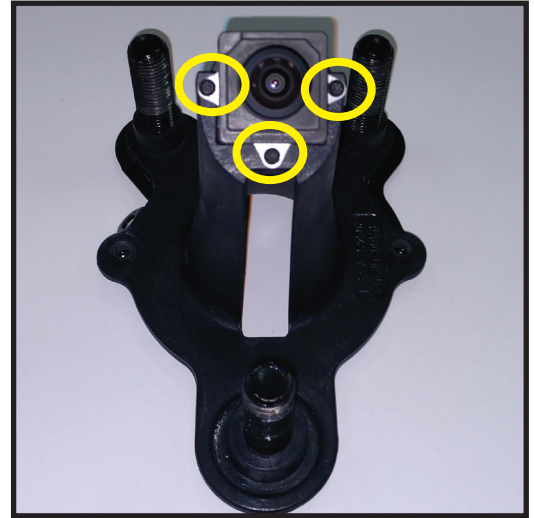


Figure B

ASSEMBLY

1. Place the camera between the front and rear housings like shown in Figure A. Make sure to notice and properly place the camera using the small top ledge as an indicator.
2. Run the assembly through the jeep spare tire housing and secure with either the factory screws or the provided 3 stainless steel screws. (Figure B)
3. Re-assemble spare tire assembly following the steps in reverse.

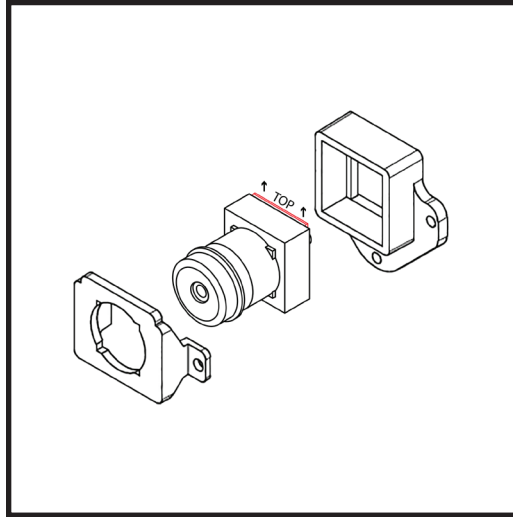


Figure A

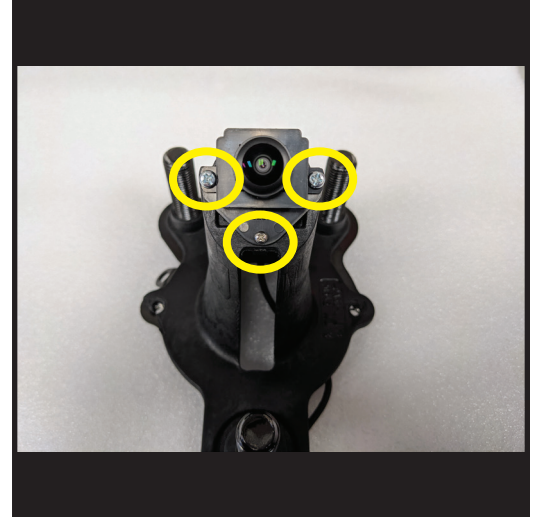


Figure B

WIRING

1. After re-assembling the spare tire bracket. Plug the brake harness back into the tailgate and run the wire through the tailgate using zip-ties. Follow the current run of the wiring in the tailgate to help with fitment of the panel that will go back on once the wires are ran.
2. Run the wire through the boot into the vehicle.
3. Once inside the vehicle, you can power the camera via a reverse trigger from the taillight. Connect the RED wire to the reverse trigger. Connect the BLACK wire to a chassis ground. The RED wire is also located at the opposite end of the harness with the YELLOW RCA if the user wants the camera powered with an accessory circuit.
4. Run the wire down the length of the vehicle caerfully. Make sure not to run near any objects that can cause extreme heat or catch the wire.
5. Connect the YELLOW RCA to the after market radio. There is a Red wire with the RCA, this can be used in two ways. This wire can bring a reverse trigger to the front of the vehicle if the camera is powered in the rear. This can also be used to power the camera in the front if the camera is desired to ne powered via an accessory circuit.

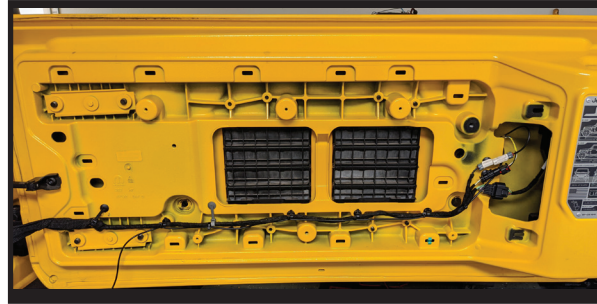


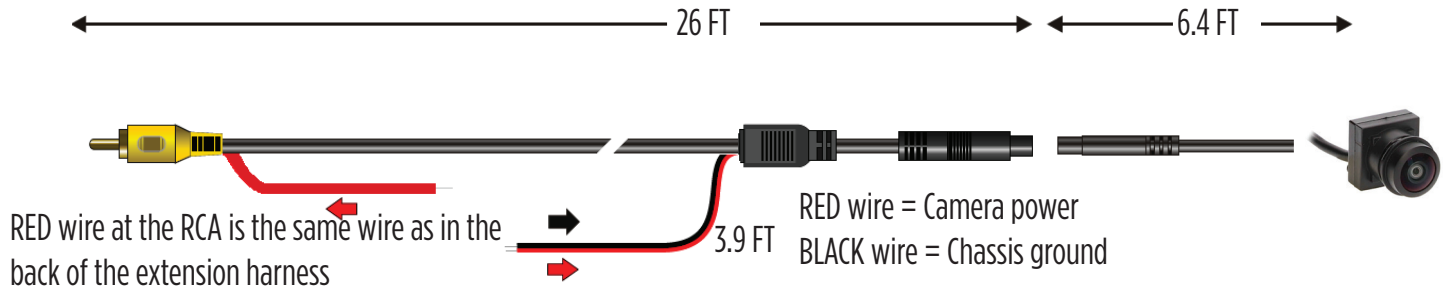
Figure A

SPECIFICATIONS

- RCA output for aftermarket radios or monitors
- Can be viewed while driving with compatible monitor
- ABS plastic housing to mount camera
- (4) Stainless steel screws provided for mounting
- Direct OE replacement
- Resolution: 550 TV Lines
- Selectable parking lines
- Viewing angle - 160 degrees
- Water resistant - IP68

Kit Includes

- 1 camera and extension cable
- Front and back - ABS camera housing
- 4 stainless steel screws
- Instruction booklet





JP-JLKT

INSTALLATION INSTRUCTIONS



Having difficulties? We're here to help.



Contact our Tech Support line at:
386-257-1187



Or via email at:
techsupport@metra-autosound.com

Tech Support Hours (Eastern Standard Time)

Monday - Friday: 9:00 AM - 7:00 PM

Saturday: 10:00 AM - 7:00 PM

Sunday: 10:00 AM - 4:00 PM



KNOWLEDGE IS POWER

Enhance your installation and fabrication skills by enrolling in the most recognized and respected mobile electronics school in our industry. Log onto www.installerinstitute.com or call 800-354-6782 for more information and take steps toward a better tomorrow.



**Metra Recommends MECP
certified technicians**