



JP-RGBKT-1

Underglow and rock light kit with RGB controller

Fits: Jeep 2018+ Wrangler JL and 2020+ Gladiator



Table of Contents

Contents and Tools.....	Prefix
Pre-Installation.....	1
Connections and cable routing.....	1
Installation.....	2-7
APP Information.....	8

What's in the in box		
Components	Cables	Hardware
<ul style="list-style-type: none"> • RGB-CB1 Controller • Accessory quick connect adaptor • (4) RGB rock lights • (4) RGB under glow tubes • (2) RGB grille tubes 	<ul style="list-style-type: none"> • 12" Extension cable • 36" Extension cable • (2) 40" Extension cables • 48" Extension cable • (3) 68" Extension cables • 108" Extension cable 	<ul style="list-style-type: none"> • Driver side accessory pack • Passengers side accessory pack • Exterior installation pack

Tools required		
Hand Tools	Power Tools	Additional Supplies
#2 Phillips screw driver 9/32" and 5/16" Socket or nut driver Interior pry tool (Suggested IBPPK) Side cutter	Drill or 1/4" impact driver Socket adapter	Automotive fish tape, or firewall grommet penetrating tool Dish soap or silicone lubricant

WARNING

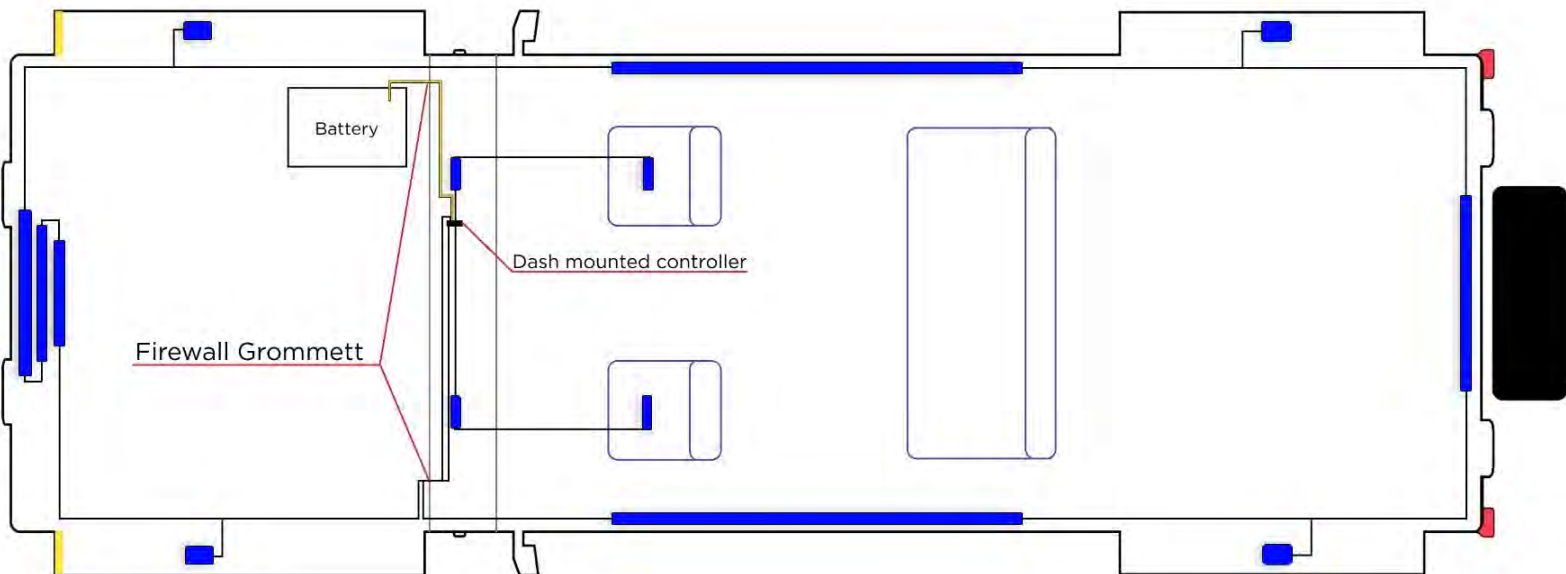
Installation must be performed on a flat, level, and dry surface.
 Failure to secure vehicle, may result in the vehicle
 causing damage and bodily harm.

Pre-Installation

- Open Kit, confirm all parts are accounted for.
- Layout kit on bench, as it would be installed in the vehicle.
- Using a 12V battery or 12V power supply, test product functionality.
 - White Trigger - Reverse light
 - Orange Trigger - Turn signal (must diode isolate each turn signal wire when connecting)
 - Red Trigger - Brake light
 - Red wire - Accessory turn on
 - Yellow - Battery power
- Using wheel chocks, secure at least (2) of the vehicle tires.

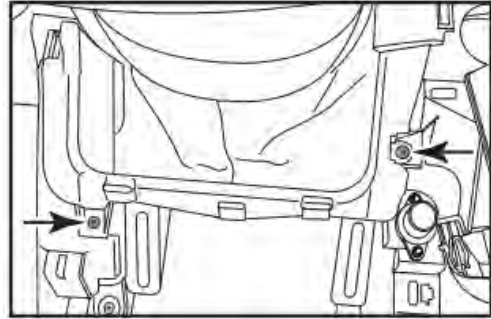
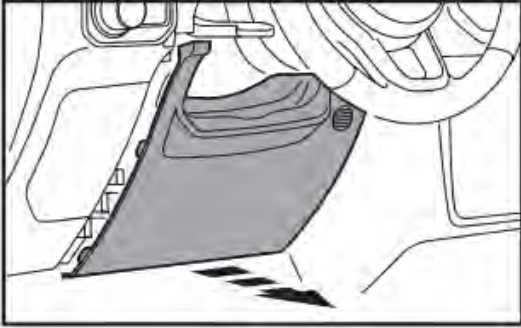


Cable routing and tube placement overview

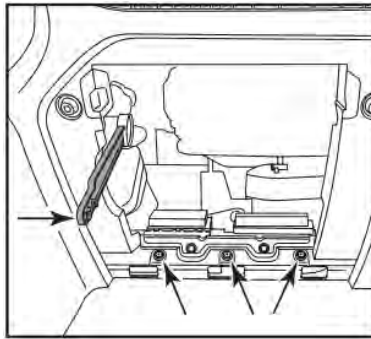


Installation

1. Unclip and remove the panel below the steering column.



2. Open glovebox, then unclip the hinge and drop the glovebox.



3. Attach RGB-CB1 controller to bracket provided with kit.



4. Using a T-20 locate and remove the two OE screws, and mount the controller bracket.



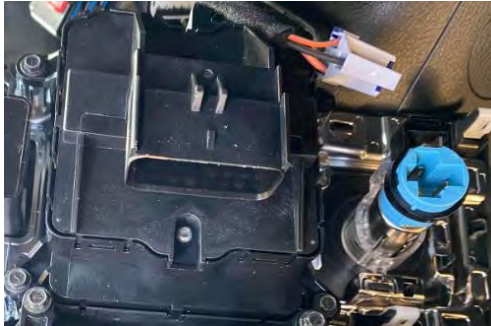
5. Using panel removal tool, remove the Start/HVAC panel



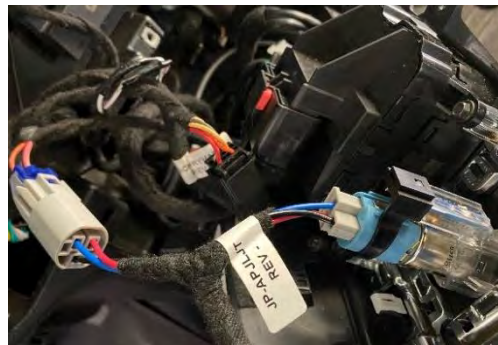
6. Remove (1) screw holding the accessory panel to the sub-dash. Locate panel clips and carefully pull each section free; this may require the panel removal tool.



7. Locate the power outlet. Disconnect the power outlet harness and connect the accessory power harness to that connector. Insert the other accessory power harness connector into the disconnected plug.



8. Connect t-harness and route accessory wires as indicated:
a. Red of the T-Harness, to the accessory turn on of the controller.
b. Black of the T-Harness, to the black ground wire of the controller.



9. Locate passenger side tube, make connection to the controller and secure tube to dash brace.



10. Take Passenger interior harness, connect to dash tube and route wire under door sill trim, carpet, and under the passengers seat. Connect harness to under seat tube and secure to seat.



11. Secure tube to under the front passenger's seat.



12. Using a semi-rigid wire fishing tool, insert the wire tool in the cavity of the center console just in front of the carpet snap. Fish the cable from the driver side tube across the center console to the passenger side.



13. Connect the drivers side LED tube wire, and position and mark the included brackets for the driver knee bar.
14. Connect cable, and route under the driver seat using the same process as the passenger side.
15. Locate passengers side firewall plug, and route the yellow battery wire into this port. (we recommend liquid soap, or silicon lubricant [Metra PN: IB05074] to pass these wires through the rubber grommet.)



*This will be seen from the interior of the vehicle. Firewall grommet removed for better view.

16. Locate the grommet on the driver side, route “Controller to FL Wheel and Grille” and “Left Side to Controller” into this grommet. Connect to controller installed in dash.



17. To remove the front grille, locate the (6) six plastic fasteners at the top of the grille, that are located under the hood.



18. Starting at one side of the grille, firmly pull out on the bottom edge to release it from the panel. Continue this process across the entire lower edge until grille is free.



19. Using “Controller to FL Wheel and Grille” cable, bring wire to front of the vehicle, route short wire to rock light location at top of fender well. Using supplied hardware, carefully drill 3/8” hole to pass connector through. Secure rock light to fender well. Continue routing wire behind headlight, in front of radiator.



20. Connect the "Grille Tubes Lights" to the cable routed into radiator area. 10" tube can be secured by zip tie (as shown) or clamp.



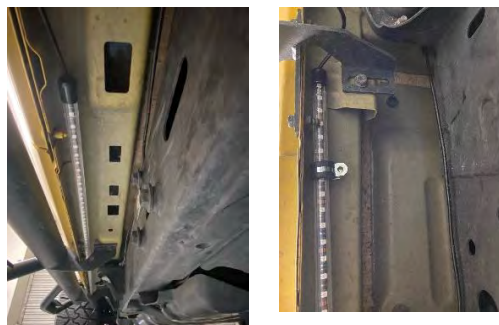
21. Connect the "Front Bumper Tube" to the lower grille tube, connecting the tube to the frame of the vehicle using clamps and self-tapping screws.



22. Route cable to passengers side (right) front wheel well and mount rock light using the supplied hardware, carefully drill 3/8" hole to pass connector through. Secure rock light to fender well



23. Continue to pull cable to passengers side (right) rocker, using the supplied hardware clips and self-tapping screws.



24. Connect cable labeled "Right Side to RR Wheel and Rear Bumper", to connection and route cable to the rear fender rock light. (Fasten the rock light, using the same technique from steps 19 and 22)
25. Complete routing cable to rear bumper, connect cable to rear tube and mount using supplied clamp and self-tapping screws.



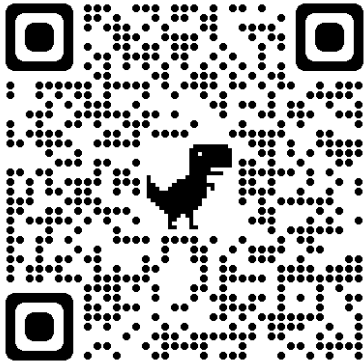
26. Connect the cable labeled "Rear Bumper to LR Wheel and Left Side" to rear bumper tube, and route cable to drivers side (left) rear rock light. (Fasten the rock light, using the same technique from steps 19 and 22)
27. Continue routing cable to drivers side (Left) rocker panel, connect tube to cable and secure tube using supplied clamp and self-tapping screws. (Same as step 23)
28. Route "Left Side to Controller" cable down firewall and connect to the driver side (left) tube.

Now that you have mounted all the tubes and rock lights, we need to make your connections to the Jeep electrical system.

29. Connect the RED wire of the light controller labeled "Ignition", to the red wire and the black of the included t-harness connected to the power outlet of the Jeep. (Installed in steps 6-8)
30. Connect the Yellow wire, to the Jeeps battery, ensuring all bolts are tightened.
31. Using supplied zip ties, review all cable routing. Securing any slack with zip ties, making sure to avoid pinch point, anything that moves or rotates, and hot exhaust pipes.

Wireless smart device application

Google® Play Store



iOS® APP Store

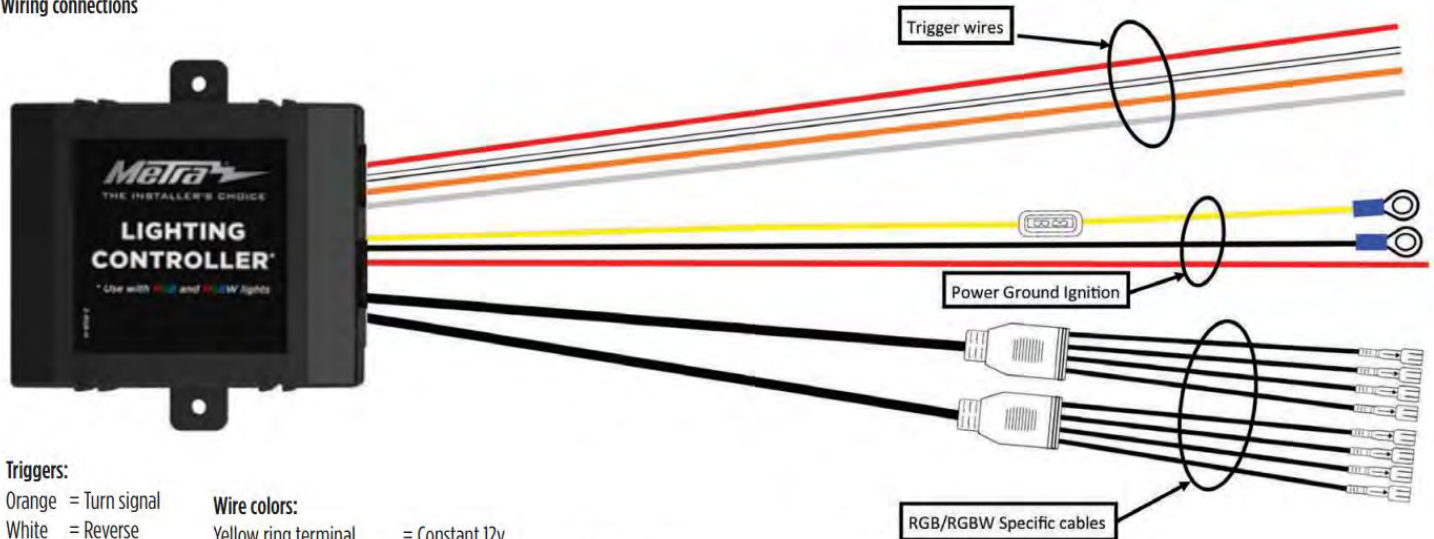


For a full copy of the Metra RGBW app instructions, and how to use the additional triggers provided by the lighting controller. Please visit the link or QR code below.



http://www.metraonline.com/files/products/RGBW_APP_Instructions.pdf

Wiring connections



Triggers:

- Orange = Turn signal
- White = Reverse
- Red = Brake
- Gray = Auxiliary

Wire colors:

- Yellow ring terminal = Constant 12v
- Black ring terminal = Ground
- Red ring terminal = Accessory 12v

RGB / RGBW:

Specific light connectors

Thank you for purchasing your Jeep Accessory from Metra Electronics! We're excited to see your installs, also if you have any questions, comments, feedback on the product, please contact us at techsupport@metra-autosound.com.



Jeep® Accessories

JP-RGBKT-1

REV 1.2



www.MetraOnline.com

Tech Support
(386)257-1187