



## 3' UTV Chasing **RGB** whip antenna

Visit [metrapowersports.com](https://www.metrapowersports.com) to view the available installation parts and ATV/UTV accessories.

### KIT FEATURES

---

- Flexible Polycarbonate tube
- Quick connect base
- Heise Connectors
- 5050 RGB Strips
- Controlled with RF Remote / Smart Device app
- 1-year limited warranty

#### WHAT'S IN THE BOX

---

- Chasing RGB Whip antenna
- Pro RGB controller
- RF Remote
- Flag Hooks (2)
- Dust Cap

#### Having difficulties?

---

Contact our tech support line at:  
[Techsupport@metra-autosound.com](mailto:Techsupport@metra-autosound.com)

Or via phone at:  
**368.257.1187**

#### TECH SUPPORT HOURS (EST)

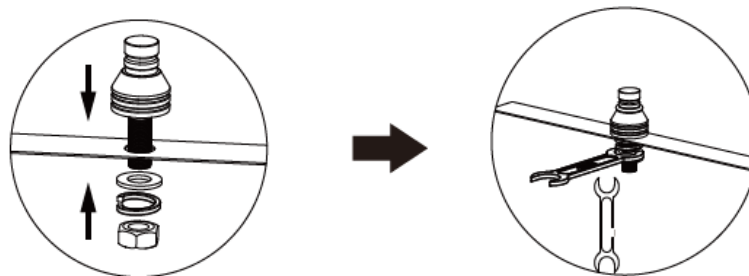
---

Monday-Friday: 9:00AM – 7:00PM  
Saturday: 10:00AM – 5:00PM  
Sunday: 10:00AM – 4:00PM

Closed for most US Federal Holidays

### Mounting the LED whip light antenna mast.

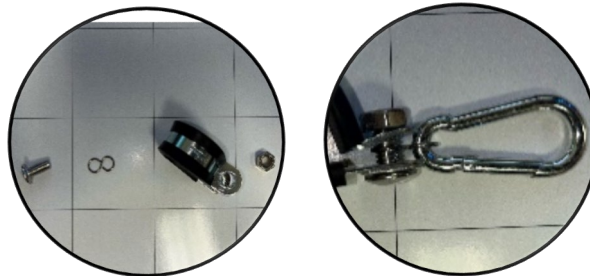
- Mounting base requires a 1/2" hole, insert into desired mounting location.



- Using the flat washer, locking washer and nut secure base to mount with a 19mm wrench.

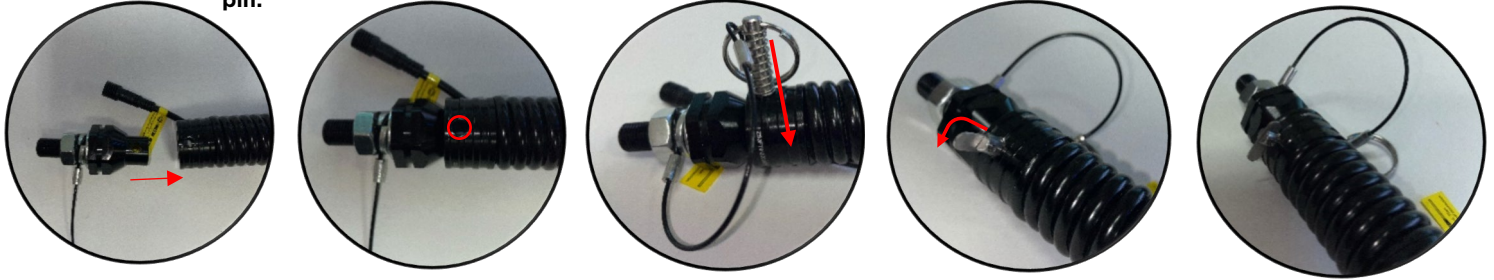
### Placing Flag on mast.

- Insert screw into clamp, placed in desired location on the mast. Place double ring on screw, closing clamp around ring and tighten using supplied nut. Using carabiner insert into open end of the ring.



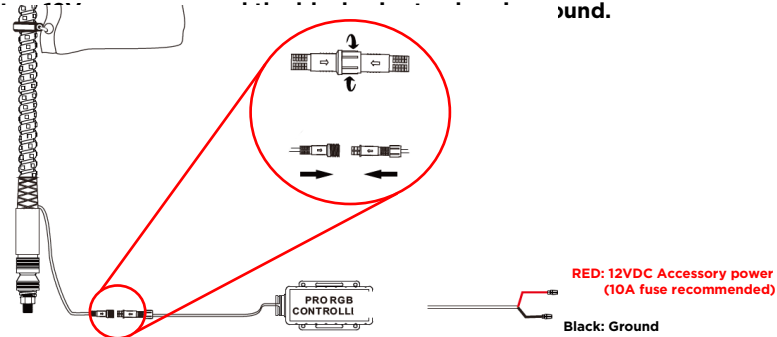
### Attaching the mast to the base.

- Line up holes in base and mast, insert pin until spring is compressed. Rotate lock to secure, then release pin.



### Connecting HEISE controller.

- Connect the whip to the controller. Align the arrows to each other, and tighten the screw cap. Connect the red wire to 12VDC Accessory power (10A fuse recommended) and the black wire to ground.



The controller has the option for turn signal and brake functions. By connecting the following wires, the whip will flash amber with vehicle's turn signal, and illuminate red when braking.

- Green wire - Left turn signal (+12VDC)**
- Yellow wire - Right turn signal (+12VDC)**
- White wire - Brake light (+12VDC)**

### RGB Controller:

- Scan QR code to download HEISE Connect app.
- In the app set pixel count to 43

