

Jeep JL Wrangler - w/o blind spot sensors



JEEP JL WRANGLER 2018-UP

Visit [HEISELED.COM](https://www.heiseled.com) to view the available installation parts and Jeep accessories.

KIT FEATURES

- Pair of smoked LED tail lights
- Mounts to OE location with OE hardware
- OE connector
- 1-year limited warranty

Tools needed

- Pry tool
- Ratchet w/extension
- 5.5mm and 10mm socket
- #2 Phillips screwdriver

Having difficulties?

Contact our tech support line at:
Techsupport@metra-autosound.com

Or via phone at:
368.257.1187

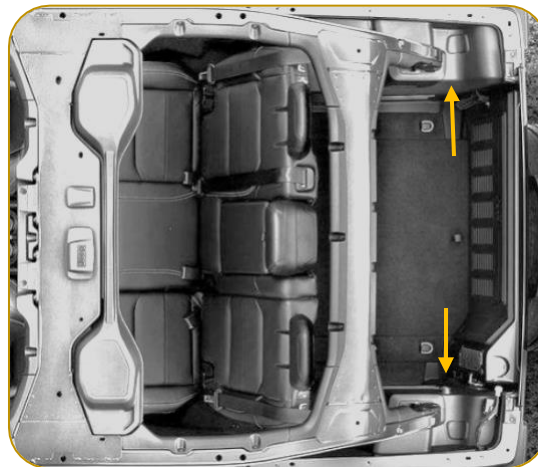
TECH SUPPORT HOURS (EST)

Monday-Friday: 9:00AM - 7:00PM
Saturday: 10:00AM - 7:00PM
Sunday: 10:00AM - 4:00PM

Closed for most US Federal Holidays

* Before starting your install verify the current tail lights are functioning properly. *

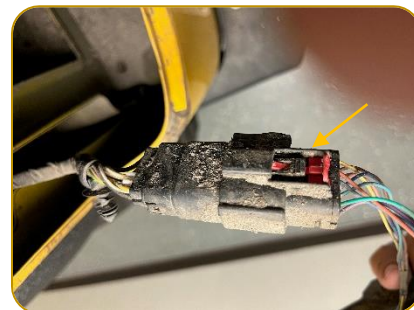
1. Unzip soft top and/or open tailgate.
2. locate the access plates that are on top of the side panels of the cargo area. Using a pry tool, release and lift off the access panel.
3. While holding the tail light, use 10mm and ratchet to unscrew the plastic bolt located inside access panel hole.



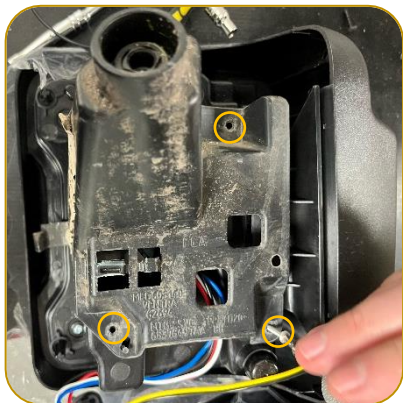
4. Remove the tail light by pulling the light away from the vehicle.



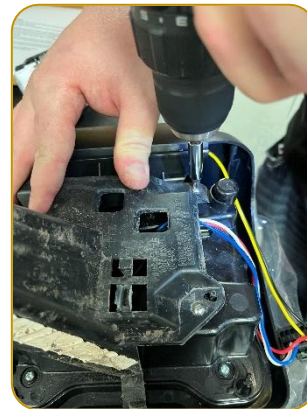
5. Locate OE connector, slide red locking tab back and disconnect.



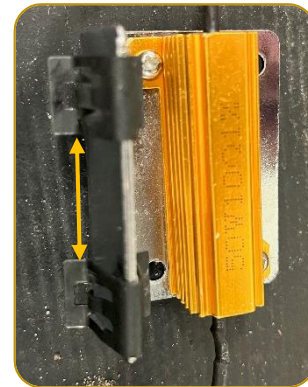
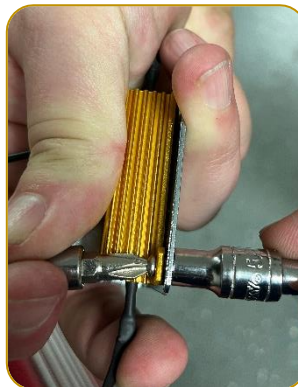
6. Place the OE tail light (lens down) on a table, and using a Phillips #2 screwdriver remove the (3) screws and factory mounting bracket from the tail light.



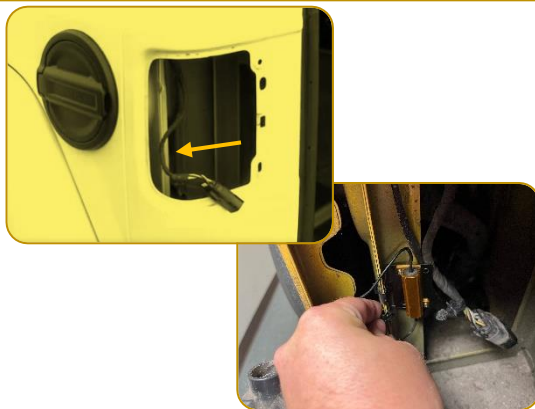
7. Using the (3) OE screws, attach the factory mounting bracket to the new tail light.



8. Mount the load resistor to the included "L shaped" bracket with the included screws and nuts.



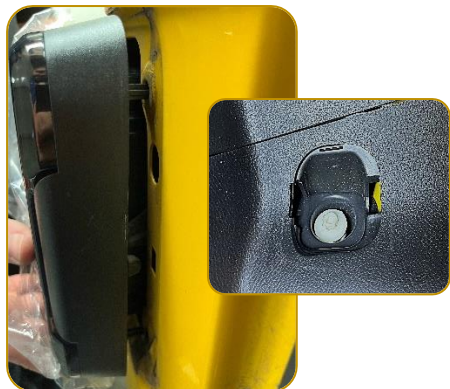
9. Install the resistor plate into the vehicle by pressing the clips onto the inner structure wall, located inside the tail light cavity.



10. Connect the tail light to the factory harness.



11. Seat the light into place. Reinstall OE plastic bolt and clip access plate back onto side panel.



12. Test functionality.

